

Original Research Article

<https://doi.org/10.20546/ijcmas.2018.701.215>

## Genetic Diversity Analysis for Salinity Tolerance in Indian Mustard [*Brassica juncea* (L.)] Using SSR Markers

Rekha Patel<sup>1\*</sup>, Ram C. Yadav<sup>1</sup>, Ram Avtar<sup>2</sup>, Sumit Jangra<sup>1</sup>,  
Geeta D. Boken<sup>2</sup>, Baldeep Singh<sup>2</sup>, and Neelam R. Yadav<sup>1</sup>

<sup>1</sup>Department of Molecular Biology, Biotechnology and Bioinformatics,

<sup>2</sup>Department of Genetics and Plant Breeding, CCS Haryana Agricultural University, Hisar-125004, Haryana, India

\*Corresponding author

### ABSTRACT

#### Keywords

*Brassica juncea*, Genetic diversity, SSR markers, Dendrogram and salinity tolerance

#### Article Info

##### Accepted:

14 December 2017

##### Available Online:

10 January 2018

Genetic diversity was performed among F<sub>2</sub> plants of the cross RH 30×CS 52 in Indian mustard (*Brassica juncea*) (CS 52 is salinity tolerant and RH 30 is salinity susceptible) using SSR markers. Out of 358 SSR markers, 42 were found polymorphic and 154 were monomorphic. A total of 225 alleles, ranging from 2 to 4 were amplified. The PIC (Polymorphic Information Content) value ranged from 0.427-0.730 of Jaccard's similarity coefficients was generated between these F<sub>2</sub> populations. F<sub>2</sub> population was grouped in 2 major clusters and 37 sub-clusters at a similarity coefficient of 0.58. The allelic information indicated that the genotypes used in the present study have distinct genetic patterns. It was concluded that SSR markers are more reliable and will be helpful in selecting diverse genotypes which can be used to identify QTL related to salinity.

### Introduction

*Brassica juncea* commonly known as Indian mustard is an amphidiploid species that originated through the interspecific hybridization of *Brassica rapa* and *Brassica nigra* (U., 1935). It is utilized as an oilseed, a condiment, vegetable, green manure, forage and cultivated primarily in tropical and sub-tropical countries (Gangapur *et al.*, 2010). *Brassica* oilseed crops have a very significant role in agriculture because almost each part of plant is consumed either by human beings or

animals depending upon the crop and its growth stage.

Soil salinity is one of the serious abiotic stresses for crops due to which large areas of the agricultural lands are becoming unfertile. Three fourth of the total Earth surface is covered by saline water. Over 830 million hectares of land area in the entire earth is salt affected, either by saline water (403 million hectares) or by the conditions related with sodicity (434 million hectares; FAO, 2008) and it is more than 6.0 per cent of the entire

land area in the world. Excess amount of NaCl occurs as an abiotic environmental factor in many places such as salt deserts in the arid and semi-arid areas (Kumar, 2013). During the last decades, apart from the natural salinity, salinization of soils due to intensive agriculture and irrigation is also becoming a major concern in agriculture. Exposure of plants to high salt concentrations causes ion imbalance, ion toxicity and hyper osmotic stress (Yamaguchi and Blumwald, 2005; Kumar *et al.*, 2013, 2014), which causes a severe retardation growth and productivity. For most of the crops concentration of 150 mM NaCl is highly toxic though, for a few crops, as low as 25 mM NaCl is lethal. Does, it is the need of hour to develop plant varieties with enhance salt tolerance. Two main methods for providing the solution to salinity stress problem includes reclamation of saline soils by use of chemicals or by growing salt tolerant plants in the saline soils (Epstein, 1985; Ashraf, 1994; Flowers and Yeo, 1995; Grieve *et al.*, 1999).

Molecular markers particularly the microsatellite markers (SSRs) provide a valuable tool for genetic analysis and produce salt tolerant plants (Tanksley, 1989). It can help in the identification of suitable parental lines, diversity and pedigree analyses and is more suitable to fasten the selection and development of new improved genotypes, as it is independent of environmental factors and developmental stage of the plant (Parida, 2010).

At present, molecular markers are being successfully used to interpret genetic diversity among populations. Amongst the various types of molecular markers used, Simple Sequence Repeat (SSR) markers are generally used because of their higher reproducibility, co-dominance, abundance, wide distribution throughout the genome, easy scorability and multi-allelic variation (Powell *et al.*, 1996).

SSR have been used for genetic diversity analysis in a number of crops including Indian bread wheat (Mir *et al.*, 2011), rice (Rahman *et al.*, 2012) and maize (Sivaranjini *et al.*, 2014). A large number of SSR markers have been developed and extensively characterized in *B. rapa* (Suwabe *et al.*, 2002 and Ramchiary *et al.*, 2011) and *B. napus* (Wang *et al.*, 2012 and Li *et al.*, 2013). However, only few SSR markers are reported in *B. juncea* (Hopkins *et al.*, 2007, Vinu *et al.*, 2013, Pratap *et al.*, 2015 and Avtar *et al.*, 2016). Genetic diversity information forms the foundation of any breeding program and is of great importance to the sustainability of plant populations. An understanding of organized germplasm and relationship among genotypes provides an opportunity to develop improved crops by more efficient sampling of genotypes (Afiah *et al.*, 2007). The present investigation was to evaluate the genetic diversity in Indian mustard genotypes for tolerance against salt stress. Identification of such genetic diversity will help in introgression of salinity tolerance into other high yielding cultivars.

## **Materials and Methods**

Two parental lines (CS 52 and RH 30) and F<sub>2</sub> progeny lines of *Brassica juncea* were obtained from the Oilseeds Section, Department of Genetics & Plant Breeding, CCS HAU, Hisar during rabi, 2014-15.

### **Screening of parental genotypes under salinity stress condition in Laboratory**

The crop was raised during *rabi* season (2014-15) in the laboratory of the Department of Molecular Biology, Biotechnology and Bioinformatics, CCS HAU. The seeds of parents i.e. RH 30 and CS 52 were shown at three salinity levels i.e. control, 6 dS/m, 8 dS/m and 10 dS/m in petri plates containing MS medium. Seed germination rate was observed (Su, 2013).

### **Genomic DNA isolation, purification and quantification**

Genomic DNA was isolated from young leaves using CTAB method (Saghai-Marroof *et al.*, 1984). The precipitated DNA was washed with 70% ethanol and dried overnight at room temperature. The dried pellets were dissolved in T.E. buffer (1M Tris, 0.5M EDTA and pH 8.0). The DNA quality and concentration was checked by electrophoresis in 0.8% agarose gel and UV spectrophotometer.

### **PCR amplification**

SSR markers were used to evaluate genetic variability among the Indian mustard genotypes. PCR amplifications were performed using T100™ thermocycler. The total volume of PCR reaction was 20 µl per sample, containing 1 µl DNA, 2 µl of 10X PCR buffer with MgCl<sub>2</sub>, 0.4 µl of 10 mM each forward and reverse primers, 0.4 µl of 10 mM dNTP and 0.25 µl of 1.25U *Taq* DNA polymerase. The PCR tubes were set on the wells of the thermocycler plate. Then, the machine was run according to the following setup: Initial denaturation at 95°C for 3 min; Denaturation at 94°C for 1 min; Annealing at 50-60°C for 1 min; Extension at 72°C for 1 min; completion of cycling program (40 cycles); Final extension at 72°C for 7 min and reaction were held at 4°C. The amplified products were separated on 6% polyacrylamide gels containing ethidium bromide (Wang *et al.*, 2003). Molecular weight marker of 20 bp was run with the PCR products. DNA bands were observed on UV-trans-illuminator in the dark chamber of the Image Documentation System.

### **Data analysis**

All distinct bands (SSR markers) were thereby given identification numbers according to their position on gel and scored visually on the

basis of their presence (1) or absence (0), separately for each primer. The scores obtained using all markers in the SSR analysis were then pooled to create a single data matrix and to construct a UPGMA dendrogram using NTSYS-pc software (Rohlf, 1990).

### **Results and Discussion**

Seed germination was studied using three salinity levels *i.e.* control, 6 dS/m, 8 dS/m and 10 dS/m in petri plates containing MS medium. The results revealed a significant effect of salinity on seed germination rate and length of shoot and root in Indian mustard (Figure 1). The germination percentage of parental genotypes of CS 52 and RH 30 were 60% and 40% under salinity concentration at 10 dS/m, which was lower than control and treatments. *Brassica* was classified as moderately salt tolerant with a superiority of amphidiploids species over the diploid species (He and Cramer, 1992). Ashraf and Harris (2004) reported that the amphidiploids species are more salt tolerant as compared to diploid species.

The decrease in growth under the saline condition by the reduction in leaf area, yield and decreased water uptake along with decline in photosynthesis (Ali *et al.*, 2004). It was detected that significant variances were given among all genotypes and NaCl-treatment with respect to shoot length, root length and biomass production. Pessarakli and Kopec (2009) observed that shoot length decreased by the increasing salt concentrations. It is well established that adverse effects of salinity affect plants in various ways: oxidative stress, water stress, ion toxicity, genotoxicity, nutritional disorders, alteration in the metabolic processes, membrane disorganization, reduction of cell division and expansion (Munns 2002; Zhu, 2007). These mechanisms declined plant growth and persistence (Carillo *et al.*, 2011; Sha Filippou

*et al.*, 2014). Our investigations are supported with the previous results of other experiments (Carpici *et al.*, 2009; Bakht *et al.*, 2011; Hussain *et al.*, 2014; Hoque *et al.*, 2015; Billah *et al.*, 2017).

**SSR markers based analysis**

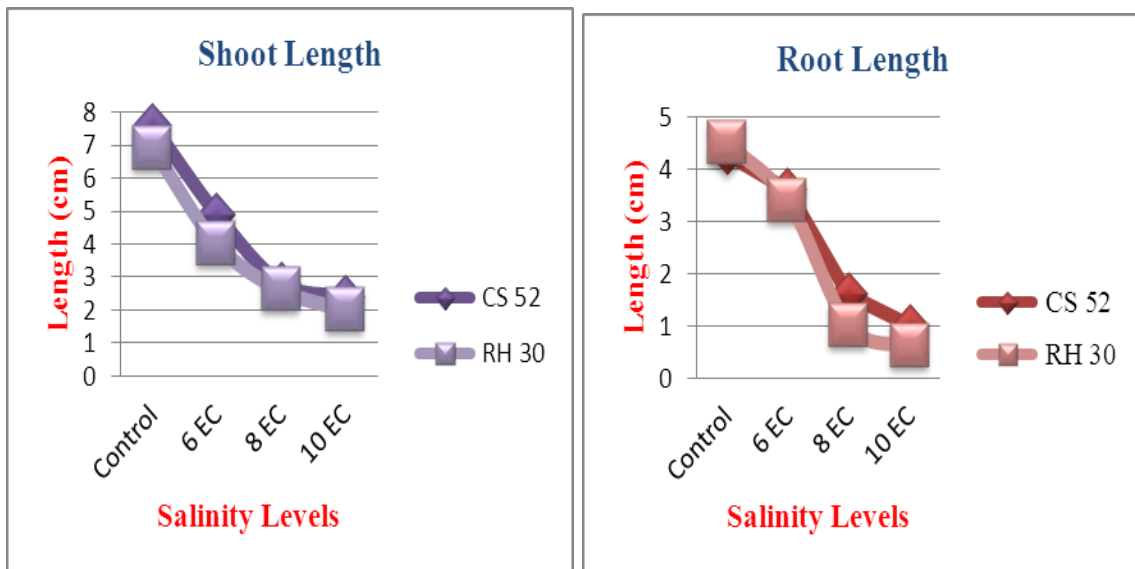
In the present research work, genetic diversity was assessed among F<sub>2</sub> plants of the cross RH 30×CS 52 along with both the parents in Indian mustard (*Brassica juncea*). Out of 358 SSR markers, 42 were clear, distinguishable and unambiguous bands were chosen for

genetic diversity evaluation and 153 were monomorphic; did not generate any amplification product or stable banding patterns. A total of 225 alleles were amplified and the number of alleles ranged 2-4 per primers (Figure 2 and 3; Table 1). The average number of alleles in the present study was lower than those reported in most other studies on Indian mustard using SSR markers. Using 134 SSR markers, Vinu *et al.*, (2013) detected 2-8 alleles per primers; Prajapat *et al.*, (2014) observed 1-8 alleles with a mean of 2.79 and Avtar *et al.*, (2016) found 2-5 alleles with an average of 2.9 per primer.

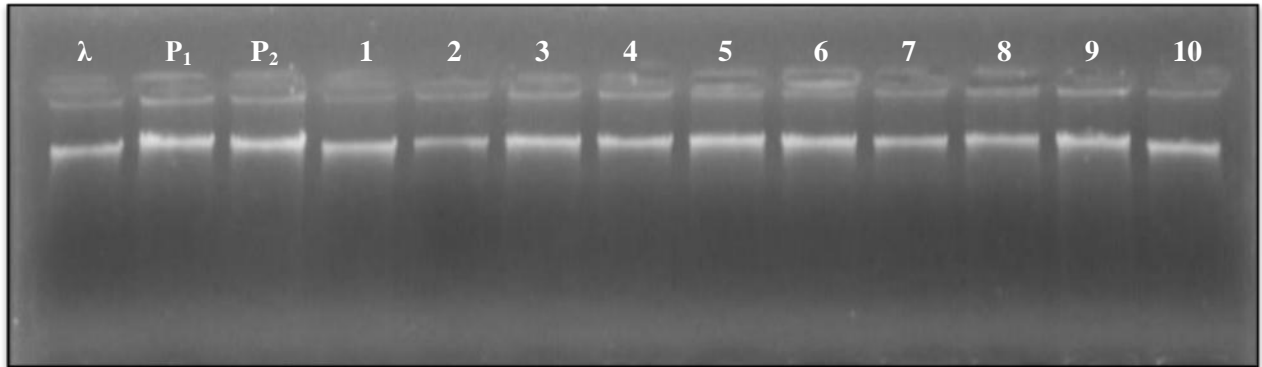
**Table.1** Summary of SSR amplified products

S.No.	SSR amplified products	values
1	Total number of primer pairs tested	358
2	Number of polymorphic primers	42
3	Total number of polymorphic bands	42
4	Total number of monomorphic bands	153
5	Size of amplified products (bp)	115-300
6	Range of alleles	2-4
7	Range of PIC value	0.427-0.730
8	Average of PIC value	0.555

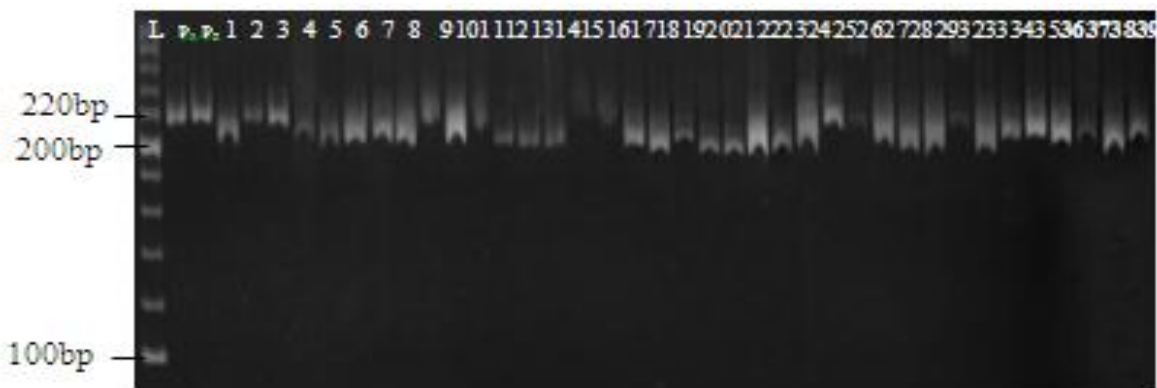
**Fig.1** Effect of salinity levels on length of shoot and root in parental genotypes *i.e.* CS 52 and RH 30 under laboratory conditions



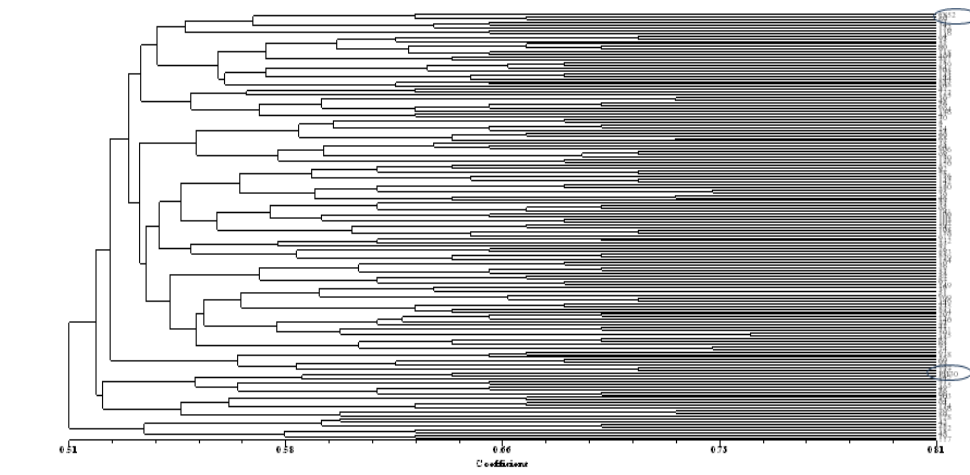
**Fig.2** Agarose gel electrophoresis showing genomic DNA of parents P<sub>1</sub> and P<sub>2</sub> (P<sub>1</sub>-CS 52, P<sub>2</sub>-RH 30). Where 1-10 plants showing F<sub>2</sub> (RH 30 × CS 52) population, λ -lambda DNA (50 ng/μl)



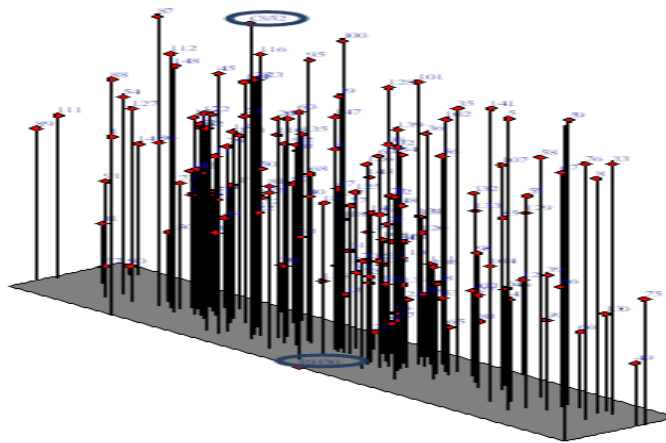
**Fig.3** Polyacrylamide gel showing allelic polymorphism among F<sub>2</sub> plants using marker GOL 3, P<sub>1</sub>-CS 52, P<sub>2</sub>-RH 30, L- Ladder (20bp) and 1-39 F<sub>2</sub> plants



**Fig.4** Dendrogram (NTSYS-pc) displaying diversity among 156 F<sub>2</sub> population (RH 30 × CS 52) and parental genotypes using allelic diversity data at 42 SSR loci



**Fig.5** Three dimensional PCA scaling display diversity of 156 F<sub>2</sub> progeny lines (RH 30 × CS 52) and parental genotypes using allelic diversity data at 42 SSR loci



### Genetic diversity evaluation studies

The mean polymorphic information content (PIC) values provide an estimate of the discriminatory power of a locus by taking into account the number of alleles that were expressed, as well as, the relative frequencies of the alleles. In our study, the PIC values ranged from 0.427-0.730 with an average of 0.555. SSR Ni2-A01 was found to be the most informative marker depicting the highest PIC value of 0.730; source of this marker is *Brassica nigra*. Several researchers have used SSR markers for diversity analysis in *Brassica species* (Abbas *et al.*, 2009; Celucia *et al.*, 2009). In our study, the average PIC values were found to be higher than that of reported by Turi *et al.*, (2012) in *B. juncea* (0.46). Gupta *et al.*, (2014) reported low PIC value 0.281; Sudan *et al.*, (2016) PIC values ranged from 0.12-0.61 with an average to 0.314 but lower than that, observed by Nanjundan *et al.*, (2015). The PIC values (0.38-0.96) observed by Avtar *et al.*, (2016) were found to be higher than that of our study. Lower number of alleles per locus and lower PIC values may be attributed either to the use of less informative SSR markers, or the presence of lesser genetic diversity among the tested genotypes.

The Unweighted Pair Group Method with Arithmetic mean (UPGMA) dendrogram was constructed using Jaccard's similarity coefficients based on SSR marker data generated on F<sub>2</sub> population with parents (RH 30 and CS 52) (Figure 4). UPGMA grouped into two main clusters at a similarity coefficient of 0.51. Both clusters were further divided into sub clusters i.e. 37 sub-clusters at a similarity coefficient of 0.58. The highest populations for genetic similarity coefficient were found near to CS 52 (salinity tolerant). The least similarity coefficient populations were found near to RH 30 (salinity sensitive); this showed that presence of maximum genetic diversity lie between both the genotypes. However, Kumar *et al.*, (2013) observed eight clusters with a range of 1-18 genotypes in each cluster (cluster III being the largest) in the genetic diversity study on forty six Indian mustard genotypes. The grouping of accessions based on SSR marker data seems to be more reliable than morphological (phenotypic) data as it is free from environmental fluctuations. Vieira *et al.*, (2007) also suggested that a large portion of variation detected by molecular markers is non-adaptive and is, therefore, not subject to either natural or artificial selection as compared with phenotypic characters, which



in addition to selection pressure are influenced by the environment. Principal component analysis (PCA) explained variation based on the molecular data by phenotypic data (Figure 5). In their study PCA revealed that the grouping of genotypes based on the SSR marker data was more convincing than the phenotypic data. Therefore, the genetic diversity analyzed in the present study based on SSR markers is more authentic than the phenotypic data. Genetic diversity analysis is helpful in selecting diverse genotypes which can be used to identify QTL related to salinity.

The present study revealed that genetic diversity between the genotypes and F<sub>2</sub> population can be exploited through hybridization to recover the segregants possessing high yield potential with improved seeds quality characteristics. However, genetic diversity analysis at molecular level by SSR markers that covers the whole genome can be helpful for the sequencing of whole genome and also to identify the diverse parents. Molecular markers are also help in construction of a linkage map and QTL identification for salinity tolerance, which will lead to the development of salt tolerant cultivars with improved yield.

## References

- Abbas, S.J., Farhatullah, Marwat, K.B., Khan, I.A. and Munir, I. 2009. Molecular analysis of genetic diversity in Brassica species. *Pak. J. Bot.* 41: 167-176.
- Afiah, S.A., Abdelsalam, A.Z.E., Kamel, E.A., Dowidar, A.E. and Ahmed, S.M., 2007. Molecular genetic studies on canola crosses under Maryout conditions, African Crop Science Conference Proceedings. 8: 633-642.
- Ali, Z., Khan, A. S. and Asad, M. A. 2004. Salt tolerance in bread wheat: Genetic variation and heritability for growth and ion relation. *Asian J. Plant Sci.* 1: 420-22.
- Ashraf, M. 1994. Breeding for salinity tolerance in plants. *Crit. Rev. Plant Sci.* 13: 17-42.doi:10.1080/713608051.
- Ashraf, M. and Harris, P.J.C. 2004. Potential biochemical indicators of salinity tolerance in plants. *Plant Sci.* 166: 3-16.
- Avtar, R., Rani, B., Jattan, M., Manmohan, Kumari, N. and Rani, A. 2016. Genetic diversity analysis among elite gene pool of Indian mustard using SSR markers and phenotypic variations. *The Bioscan.* 11(4): 3035-3044.
- Bakht, J., Shafi, M., Jamal, Y. and Sher, H. 2011. Response of maize (*Zea mays* L.) to seed priming with NaCl and salinity stress. *Spanish J. Agric. Res.* 9: 252.
- Billah, M., Latif, M. A., Hossain, N. and Uddin, M.S. 2017. Evaluation and selection of salt tolerant hybrid maize under hydroponics culture. *Res. on Crops.* 18(3): 481-489.
- Carillo, P., Annunziata, M., Pontecorvo, G., Fuggi, A. and Woofrow, P. 2011. Salinity stress and salt tolerance. In: *Agricultural and Biological Sciences. Abiotic Stress in Plants-Mechanisms and Adaptation.* 21-38.
- Carpici, E. B., Celik, N. and Bayram, G. 2009. Effects of salt stress on germination of some maize (*Zea mays* L.) cultivars. *Afr. J. Biotechnol.* 8: 4918-22.
- Celucia, S.U., Pena, R.C. and Villa, N.O. 2009. Genetic characterization of *Brassica rapa chinensis* L., *B. rapa parachinensis* (L. H. Bailey) Hanelt, and *B. oleracea alboglabra* (L. H. Bailey) Hanelt using simple sequence repeat markers. *Phil. J. Sci.* 138: 141-152.
- Epstein, R. 1985. Extinction-induced resurgence: preliminary investigations and possible applications. *Psychol. Rec.* 35: 143-153.

- FAO. 2008. FAO Land and Plant Nutrition Management Service. Available at: <http://www.fao.org/ag/agl/agll/spush>
- Flowers, T.J. and Yeo, A.R. 1995. Breeding for salinity resistance in crop plants. Where next? *Aust. J. Plant Phys.* 22: 875-884. doi:10.1071/PP9950875
- Gangapur, D. R., Prakash, B. G. and Hiremath, C. P. 2010. Genetic diversity analysis of Indian mustard (*Brassica juncea* L.). *Elect. J. Plant Breed.* 1: 407-413.
- Grieve, C.M., Suarez, D.L. and Shannon, M.C. 1999. Effect of saline irrigation water composition on selenium accumulation by wheat. *J. Plant Nutr.* 22: 1443-1450. doi:10.1080/01904169909365725.
- Gupta, N., Zargar, S.M., Gupta, M. and Gupta, S.K. 2014. Assessment of genetic variation in Indian mustard (*Brassica juncea* L.) using PCR based markers. *Mol. Plant Breed.* 5: 10-17.
- He, T. and Cramer, G.R. 1992. Growth and mineral nutrition of six rapid-cycling Brassica species in response to sea water salinity. *Plant Soil.* 139: 285-294.
- Hopkins, C. J., Cogan, N.O.I., Hand, M., Jewell, E., Kaur, J., Xi, L., Lim, G. A. C., Ling, A. E., Love, C., Mountford, H., Todorovic, M., Vardy, M., Spangenberg, G. C., Edwards, D. and Batley, J. 2007. Sixteen new simple sequence repeat markers from *Brassica juncea* expressed sequences and their cross-species amplification, *Mol. Eco. Notes.* 7: 697-700.
- Hoque, M. M. I., Jun, Z. and Guoying, W. 2015. Evaluation of salinity tolerance in maize (*Zea mays* L.) genotypes at seedling stage. *J. Biosci. Biotechnol.* 4: 39-49.
- Hussain, I., Ashraf, M. A., Anwar, F., Rasheed, R., Niaz, M. and Wahid, A. 2014. Biochemical characterization of maize (*Zea mays* L.) for salt tolerance. *Plant Bios.* 148: 1016-26.
- Kumar, M. 2013. Crop plants and abiotic stresses. *J. Biomol. Res. Ther.* 3: 25. doi: 10.4172/2167-7956.1000e125.
- Kumar, M., Lee, S.C., Kim, J.Y., Kim, S.J., Aye, S.S. and Kim, S.R. 2014. Over-expression of dehydrin gene, OsDhn1, improves drought and salt stress tolerance through scavenging of reactive oxygen species in rice (*Oryza sativa* L.). *J. Plant Biol.* 57: 383-393. doi:10.1007/s12374-014-0487-1.
- Li, H., Younas, M., Wang, X., Li, X., Chen, L., Zhao, B., Chen, X., Xu, J., Hou, F., Hong, B., Liu, G., Zhao, H., Wu, X., Du, H., Wu, J. and Liu, K. 2013. Development of a core set of single-locus SSR markers for allotetraploid rapeseed (*Brassica napus* L.). *Theor. Appl. Genet.* 126: 937-947.
- Mir, R.R., Kumar, J., Balyan, H.S. and Gupta, P.K. 2011. A study of genetic diversity among Indian bread wheat (*Triticum aestivum* L.) cultivars released during last 100 years. *Genet. Resour. Crop Evol.* 59: 717-726.
- Munns, R. 2002. Comparative physiology of salt and water stress. *Cell & Environ.* 25: 239-250.
- Nanjundan, J., Thakur, A.K., Singh, K.H. and Verma, V. 2015. Assessment of genetic diversity in Indian mustard [*Brassica juncea* (L.) Czern & Coss.] for high temperature tolerance using SSR markers. *Vegetos.* 28(4): 122-130.
- Parida, S.K., Yadava, D.K. and Mohapatra, T. 2010. Microsatellites in Brassica unigenes: relative abundance, marker design, and use in comparative physical mapping and genome analysis. *Genome.* 53: 55-67.
- Pessaraki, M. and Kopec, D. M. 2009. Screening various ryegrass cultivars for salt stress tolerance. *J. Food Agric. Environ.* 7: 739-43.
- Powell, W., Morgante, M. and Andre, C.



1996. The comparison of RFLP, RAPD, AFLP and SSR (microsatellite) markers for germplasm analysis. *Mol. Breed.* 2: 225-238.
- Prajapat, P., Sasidharan, N., Kumar, M. and Prajapati, V. 2014. Molecular characterization and genetic diversity analysis in four Brassica species using microsatellite markers. *The Bioscan.* 9(4): 1521-1527.
- Pratap, P., Thakur, A. K., Meena, P. D., Meena, H. S., Sharma, P., Singh, D. and Majumdar, R. 2015. Genetic diversity assessment in Indian mustard (*Brassica juncea* L.) for Alternaria blight tolerance using SSR markers. *J. Oilseed Brass.* 6(1): 175-182.
- Rahman, M.M., Rasaul, M.G., Hossain, M.A., Iftekharuddaula, K.M. and Hasegawa, H. 2012. Molecular characterization and genetic diversity analysis of rice (*Oryza sativa* L.) using SSR markers. *J. Crop Improv.* 26: 244-257.
- Ramchiary, N., Nguyen, V. D., Li, X., Hong, C. P., Dhandapani, V., Choi, S. R., Yu, G., Piao, Z. Y. and Lim, Y. P. 2011. Genic microsatellite markers in Brassica rapa: development, characterization, mapping, and their utility in other cultivated and wild Brassica relatives. *DNA Res.* 18: 305-320.
- Rohlf, F.J. and Bookstein, F.L. 1990. Numerical taxonomy and multivariate analysis system NTSYS-pc, version 1.80. *System. Zoo.* 33: 302-317.
- Saghai-Marouf, M.A., Sliman, K.M., Gorgensen, R.A. and Allard, R.W. 1984. Ribosomal DNA spacer-length polymorphism in barley: Mendelian inheritance, chromosomal location and population dynamics. *Proc. Natl. Acad. Sci.* 81: 8014-8018.
- Sha Filippou, P., Bouchagier, P., Skotti, E. and Fotopoulos, V. 2014. Proline and reactive oxygen/nitrogen species metabolism is involved in the tolerant response of the invasive plant species, *Ailanthus altissima* to drought and salinity. *Env. Exp. Bot.* 97: 1-10.
- Sivaranjani, R., Santha, I.M., Pandey, N., Vishwakarma, A.K., Nepolean, T. and Hossain, F. 2014. Microsatellite-based genetic diversity in selected exotic and indigenous maize (*Zea mays* L.) inbred lines differing in total kernel carotenoids. *Indian J. Genet.* 74: 34-41.
- Su, J., Wu, S., Xu, Z., Qiu, S., Luo, T., Yang, Y., Chen, Q., Xia, Y., Zou, S., Huang, B.-L. and Huang, B. 2013. Comparison of Salt Tolerance in Brassicas and Some Related Species. *American J. Plant Sci.* 4: 1911-1917.
- Sudan, J., Khajuria, P., Gupta, S.K. and Singh, R. 2016. Analysis of molecular diversity in Indian and Exotic genotypes of *Brassica juncea* using SSR markers. *Indian J. Genet.* 76(3): 361-364.
- Suwabe, K., Iketani, H., Nunome, T., Kage, T. and Hirai, M. 2002. Isolation and characterization of microsatellites in Brassica rapa L. *Theor. Appl. Genet.* 104: 1092-1098.
- Tanksley, S. D., Young, N. D., Paterson, A. H. and Bonierbale, M. W. 1989. RFLP mapping in plant breeding: new tools for an old science. *Biotechnol.* 7: 257-264.
- Turi, N.A., Farhatullah, Rabbani, M.A. and Shinwari, Z.K. 2012. Genetic diversity in the locally collected Brassica species of Pakistan based on microsatellite markers. *Pak. J. Bot.* 44: 1029-1035.
- U., 1935. Genome analysis in Brassica with special reference to the experimental formation of *B. napus* and peculiar mode of fertilization, *Japan J. Bot.* 7: 389-452.
- Vieira, E., Carvalho, F., Bertan, I., Kopp, M., Zimmer, P., Benin, G., da Silva, J., Hartwig, I., Malone, G. and de Oliveira, A. 2007. Association between genetic distances in wheat (*Triticum aestivum*

- L.) as estimated by AFLP and morphological markers. *Genet. Mol. Biol.* 30: 392-399.
- Vinu, V., Singh, N., Vasudev, S., Yadava, D. K., Kumar, S., Naresh, S., Bhat, S. R. and Prabhu, K. V. 2013. Assessment of genetic diversity in *Brassica juncea* (Brassicaceae) genotypes using phenotypic differences and SSR markers. *Rev. Biol. Trop.* 61(4): 1919-1934.
- Wang, D., Shi, J., Carlson, S. R., Cregan, P.B., Ward, R.W. and Diers, B.W. 2003. A low-cost, high throughput polyacrylamide gel electrophoresis system for genotyping with microsatellite DNA markers. *Crop Sci.* 43: 1828-1832.
- Wang, F., Wang, X.F., Chen, X., Xiao, Y., Li, H., Zhang, S., Xu, J., Fu, J., Huang, L., Liu, C., Wu, J. and Liu, K. 2012. Abundance, marker development and genetic mapping of microsatellites from unigenes in *Brassica napus*. *Mol. Breed.* 30: 731-744.
- Yamaguchi, T. and Blumwald, E. 2005. Developing salt-tolerant crop plants: challenges and opportunities. *Trends Plant Sci.* 10: 615-620. doi: 10.1016/j.tplants.2005.10.002.
- Zhu, J. K. 2007. *Plant Salt Stress*. John Wiley & Sons, Ltd.

**How to cite this article:**

Rekha Patel, Ram C. Yadav, Ram Avtar, Sumit Jangra, Geeta D. Boken, Baldeep Singh and Neelam R. Yadav. 2018. Genetic Diversity Analysis for Salinity Tolerance in Indian Mustard [*Brassica juncea* (L.)] Using SSR Markers. *Int.J.Curr.Microbiol.App.Sci.* 7(01): 1776-1785. doi: <https://doi.org/10.20546/ijcmas.2018.701.215>