

## Original Research Article

<https://doi.org/10.20546/ijcmas.2017.607.145>

## Hypoglycemic Efficacy of *Catharanthus roseus* and *Opuntia ficusindica* in Mice Diabetic Model

Shilpi Jaya and Baidyanath Kumar\*

Department of Biotechnology, College of Commerce, Arts and Science Patna-800020, India

\*Corresponding author

### ABSTRACT

#### Keywords

Diabetes mellitus, *Catharanthus roseus*, *Opuntia ficusindica*, Streptozotocin, Mice.

#### Article Info

##### Accepted:

17 June 2017

##### Available Online:

10 July 2017

Diabetes mellitus (DM) is a metabolic disorder of multiple etiologies characterized by absolute or relative deficiency of insulin secretion with or without varying degree of insulin resistance. Sedentary life style and obesity are two major epidemiological determinants of diabetes mellitus. In the present investigation hypoglycemic efficacy of methanol extract of *Catharanthus roseus* (Nayantara) of Apocyanaceae and *Opuntia ficusindica* of Cactaceae was tested on STZ induced mice diabetic models. The results clearly indicated that the diabetic control (DC) mice presented a significant lowering of body weight ( $p < 0.001$ ) when compared with the normal control (NC) mice. The DC mice showed a significantly ( $p < 0.001$ ) higher level of glucose (+279%), when compared with their normal control counterparts. Diabetic mice of both of the groups (DT<sub>150</sub> and DT<sub>250</sub>) showed a reduction in glucose levels, when compared to the DC ones. The results clearly indicated that the methanol extract of *C. roseus* and *O. ficusindica* is antidiabetic in nature due to the presence of different types of active phytochemicals.

### Introduction

Diabetes mellitus (DM) is the third leading disease, after heart attack and cancer affecting almost every organ in the human body (Nyenwe *et al.*, 2011) and is also called silent killer. This is a metabolic disorder of multiple etiologies (Mohler *et al.*, 2009) characterized by absolute or relative deficiency of insulin secretion with or without varying degree of insulin resistance (Lin and Sun, 2010; Nyenwe *et al.*, 2011).

Diabetes mellitus is characterized by recurrent or persistent hyperglycemia with an elevated fasting (>110mg/dL of blood) and post

prandial (> 130mg/dL of blood) plasma glucose level. According to WHO (2006) diagnosis a fasting plasma sugar of >126mg/dL and post prandial plasma sugar value of > 200mg/dL is considered as diabetes mellitus. There are two major forms of diabetes mellitus namely Type-1, characterized by diminished production of insulin due to degeneration of pancreatic B-cells, and Type-2, the multifactorial syndrome characterized by either hypo secretion of insulin or insulin insensitivity or sometimes both. Sedentary life style and obesity are two major epidemiological determinants of

diabetes mellitus. The current therapy of this disorder includes exogenous insulin administration (particularly in case of Type-1 diabetes mellitus), and oral hypoglycemic agents (for Type-2DM) which includes Metformin, Pioglitazone, Sulphonylurea etc. which may have adverse effects in diabetic subjects. Multiple risk factors for diabetes have been identified (WHO, 2006).

The greatest risk is impaired glucose tolerance, a precursor of diabetes. Thus, a number of type 2 diabetes prevention trials have included subjects with impaired glucose tolerance. These trials compared intensive lifestyle modifications (e.g., diet, exercise and weight loss), OHAs and placebo controls (Tuomilehto *et al.*, 2001; Knowler *et al.*, 2002). Ayurvedic treatment known as *Apatarpana* (balanced diet with restricted calories) and *Santarpana* (highly nutritious, high-calorie diet intended to increase weight) are recommended for patients with type 2 and type 1 diabetes, respectively (Sharma and Chandola, 2011).

Diabetes mellitus has been classified into some other specific types:

### **Maturity- onset diabetes of the young (MODY)**

This subgroup is a relatively rare monogenic disorder characterized by non- insulin-dependent diabetes with autosomal dominant inheritance and an age at onset of 25 years or younger. Patients are nonobese, and their hyperglycemia is due to impaired glucose-induced secretion of insulin.

### **Diabetes due to mutant insulin**

This is a very rare subtype of nonobese Type-2 diabetes. Since affected individuals were heterozygous and possessed one normal insulin gene, diabetes was mild, and showed autosomal dominant genetic transmission.

### **Diabetes due to mutant insulin receptors**

In more than 40 people with diabetes, defects in one of their insulin receptor gene have been observed.

### **Diabetes mellitus associated with a mutation of mitochondrial DNA**

Diabetes due to a mutation of mitochondrial DNA that impairs the transfer of leucine or lysine into mitochondrial proteins has been described. Most patients have a mild form of diabetes that responds to oral hypoglycemic agents. Two- thirds of patients with this subtype of diabetes have a hearing loss, and a smaller proportion had a syndrome of myopathy, encephalopathy, lactic acidosis, and stroke- like episodes (MELAS).

### **Obese type- 2 patients**

The most common form of diabetes is secondary to extra pancreatic factors that produce insensitivity to endogenous insulin. When an associated defect of insulin production prevents adequate compensation for this insulin resistance, nonketotic mild diabetes occurs. The primary problem is a “target organ” disorder resulting in ineffective insulin action that can secondarily influence pancreatic B cell function.

### **Chronic complications of diabetes**

Diabetes mellitus is associated with late clinical manifestations that include a number of pathologic changes that involve small and large blood vessels, cranial and peripheral nerves, and the lenses of eye. These lesions lead to hypertension, renal failure (nephropathy), blindness (retinopathy), autonomic and peripheral neuropathy, amputations of the lower extremities, myocardial infarction, and cerebrovascular accidents.

The Clinical Practice Guidelines for the Prevention and Management of Diabetes recommends a target glycosylated hemoglobin (HbA<sub>1c</sub>) concentration of 7.0% or less for all patients with diabetes and, for those in whom it can be safely achieved, a target HbA<sub>1c</sub> concentration in the normal range, usually  $\leq 6.0\%$  (WHO, 2006). Although nonpharmacologic therapy (e.g., diet, exercise and weight loss) remains a critical component in the treatment of diabetes, pharmacologic therapy is often necessary to achieve optimal glycemic control. Orally administered antihyperglycemic agents (OHAs) can be used either alone or in combination with other OHAs or insulin. Various classes of OHAs are now available that target the different pathophysiologic factors contributing to diabetes:  $\alpha$ -glucosidase inhibitors to delay intestinal carbohydrate absorption (Lebovitz, 1997; Inzucchi, 2002; Bayraktar *et al.*, 1996; Chiasson *et al.*, 2002), biguanides to target hepatic insulin resistance (Bailey and Turner, 1996; Kirpichnikov *et al.*, 2002; Zhou *et al.*, 2001; Holmes *et al.*, 1999; Salpeter *et al.*, 2004), insulin secretagogues to increase pancreatic insulin secretion (Klepzig *et al.*, 1999; Lebovitz, 2001; Strom *et al.*, 2003; Hatorpe, 2002; McLeod, 2004), insulin sensitizers or thiazolidinediones which function as ligands for the peroxisome proliferator-activated receptor gamma (PPAR $\gamma$ ) to target adipocyte and muscle insulin resistance (Lister *et al.*, 1999; Finegood *et al.*, 2001; Bell, 2003; Bakris *et al.*, 2003; Herz *et al.*, 2003; Nesto *et al.*, 2003; Kelly *et al.*, 1999; Lee *et al.*, 2003), and intestinal lipase inhibitor or orlistat to inhibit fat absorption and promote weight loss in obese patients (Guerciolini, 1997; Hollander *et al.*, 1998; Hanefeld and Sachse, 2002; Kelley *et al.*, 2002).

Despite excellent potencies, these synthetic antidiabetic drugs had presented unwanted

therapeutic profiles, marked by fluid retention, hypoglycemia at higher doses, liver problems, lactic acidosis, weight gain and potential cardiac hypertrophy. There is also evidence that hyperglycaemia per se has deleterious effects on beta cell function and insulin action (glucotoxicity). Thus, a concerted effort to search more effective drugs for T2DM has become the need of the time in terms of efficacy as well as safety due to the undesirable side effects of synthetic drugs.

Over the past 25 years, 50% of prescription drugs have been developed from natural products and their derivatives. These medicines have emerged as unique, safe, effective, and relatively inexpensive remedies producing minimal or no side effects with tall claims of efficacy as add on therapy (Heinrich *et al.*, 2012). Herbal drugs with antidiabetic activity can be classified into four categories according to their mode of action the first group has insulinomimetic effect and includes plant like *Momordica charantia* (bitter gourd) (Grover and Yadav, 2004). Second group acts on the  $\beta$ -cells to increase the production of insulin and include plants like *Allium cepa* (onion) and *Pterocarpus marsupium* (Vijaysaar) (Grover and Vats, 2001). The third one enhances glucose utilization in diabetic patients and includes plants like *Gingiber officinale* (ginger), *Cyamospsis tetragonalobus* (Gower plant) and *Grewia asiatica* (phalsa). They increase the viscosity of gastrointestinal contents, slow gastric emptying and act as a barrier to diffusion (Grover and Vats, 2001). Fourth group act by miscellaneous mechanisms and include plants like *Euphorbia prostrata*, *Fumaria parvia*, *Panax ginseng* and *Phyllanthus embelica*. They may alter the fiber content and thereby altering the rate and speed of absorption of glucose from the gut (Grover and Vats, 2001). The isolation and formulation of active constituents from these plants along with their

pharmacological and toxicological evaluation are the need of the modern therapeutics.

### **Review of literature**

Type- 2 diabetes is the commonest form of diabetes constituting 90% of the diabetic population. The global prevalence of diabetes is estimated to increase to 5.4% by the year 2025 (King *et al.*, 1998). The World Health Organization has predicted that the major burden will occur in the developing countries. The countries with the largest number of diabetic people are, and will be India, China and United States in 2025 (King *et al.*, 1998). Epidemiological studies among migrant Asian Indians showed higher prevalence of Type- 2 diabetes compared with the host populations and other migrant ethnic groups (Zimmet, 1999).

Studies conducted in India have highlighted that not only is the prevalence of Type- 2 diabetes high, but also that it is increasing rapidly in the urban population (Mohan *et al.*, 2001; Raman Kutty *et al.*, 2000; Misra *et al.*, 2001; Verma and Madhu, 2000; Iyer *et al.*, 2000). The burden of Type- 2 diabetes and its complications related to Indian scenario has been illustrated by Ramachandran *et al.*, 2002.

The genetics of Type- 2 diabetes has been reviewed by Torben Hansen, 2002. Beck-Nielson and Groop (1994) have suggested that the diabetic phenotype is the result of interaction of both genetic component and an important non- genetic component.

The coexistence of obesity, glucose intolerance, dyslipidemia, and hypertension, is termed as insulin resistance syndrome (IRS). Gerald Reaven (1988) initially proposed that resistance to insulin- mediated glucose disposal is the pathophysiological interface for several complex metabolic

alterations and disease. Insulin resistance syndrome in Asian Indians has been reviewed by Misra and Bikram (2002).

Regarding chromosomal abnormalities deletion syndrome due to chromosome 22q11.2 has been investigated by Elder *et al.*, 2001.

Transient neonatal diabetes mellitus (TNDM) is a rare condition which presents with intrauterine growth retardation, dehydration, and failure to thrive. The condition spontaneously resolves before 1 year of age but predisposes patients to Type- 2 diabetes later in life. Rebecca J Gardner *et al.*, (1999) have previously shown that, in some cases, TNDM is associated with paternal uniparental disomy (UPD) of chromosome 6 and suggested that an imprinted gene responsible for TNDM lies within a region of chromosome 6q. By analyzing three families, two with duplications (family A and patient C) and one with several affected subjects with normal karyotypes (family B), Elder *et al.*, (2001) have further defined the TNDM critical region. In patient A, polymorphic microsatellite repeat analysis identified a duplicated region of chromosome 6, flanked by markers D6S472 and D6S311. This region was identified on the Sanger Centre's chromosome 6 radiation hybrid map (<http://www.sanger.ac.uk/HGP/Chr6>) and spanned approximately 60 cR3000.

Using markers within the region, 418 unique P1 derived artificial chromosomes (PACs) have been isolated and used to localize the distal breakpoints of the two duplications. Linkage analysis of the familial case with a normal karyotype identified a recombination within the critical region. This recombination has been identified on the radiation hybrid map and defines the proximal end of the region of interest. They therefore propose that an imprinted gene for TNDM lies within an

18.72 cR3000 (~5.4 Mb) interval on chromosome 6q24.1-q24.3 between markers D6S1699 and D6S1010.

Bakalov *et al.*, (2009) have investigated that Turner syndrome (TS) is caused by the absence or fragmentation of the second sex chromosome, which is associated with increased risk of diabetes mellitus (DM), but the specific phenotype and genetic etiology of this trait are unknown. Cytogenetic factors related with diabetes have been largely reviewed by Bakalov *et al.*, (2004), Salgin *et al.*, (2006), Song *et al.*, (2008), Neve *et al.*, (2005), Snee *et al.*, (2006), Zhao *et al.*, (2005), Mokhtari *et al.*, (2008) etc. Suheir Assady (2009) has suggested the stem cell based therapy of diabetes mellitus.

Despite excellent potencies, these synthetic antidiabetic drugs had presented unwanted therapeutic profiles, marked by fluid retention, hypoglycemia at higher doses, liver problems, lactic acidosis, weight gain and potential cardiac hypertrophy. There is also evidence that hyperglycaemia per se has deleterious effects on beta cell function and insulin action (glucotoxicity). Thus, a concerted effort to search more effective drugs for T2DM has become the need of the time in terms of efficacy as well as safety due to the undesirable side effects of synthetic drugs.

Pallab Das Gupta and Amartya De (2012) have compiled some herbal plants and their active ingredients which play an important role in the management of diabetes mellitus. The antidiabetic properties of Bitter melon (*Momordica charantia*), Fiery costus (*Costus igneus*), Dandelium (*Taraxacum officinale*), French Lilac (*Golega officinalis*), Termeric (*Cutsuma longa*), Bael (*Aegle marmelus*), Amla (*Emblica officinalis*), Fenugreek (*Trigonella foenum-gracum*), Ginseng (*Panax ginseng*), Nayantara

(*Catharanthus roseus*), Neem (*Azadirachta indica*), Cinnamon (*Cinnamomum zeylanicum*), black berry (*Rubus fruticosus*) etc. have been greatly illustrated (Shukla *et al.*, 2000; Wadkar *et al.*, 2008; Rakesh *et al.*, 2009; Zhizun Song *et al.*, 1997; Mostak Ahmad *et al.*, 2009; Upendra Rao *et al.*, 2010; KattiShanker *et al.*, 2011; Kumar *et al.*, 2012; Manisha Modak *et al.*, 2007; Santwana Rani and Baidyanath Kumar, 2015).

Our knowledge regarding the management of diabetes mellitus by herbal products is insufficient. Therefore, it has been decided to study the active phytochemicals of some medicinal plants *viz.*, *Catharanthus roseus* (Nayantara) of family Apocyanaceae, and *Opuntia ficusindica* of family Cactaceae in the management of Diabetes Mellitus in Mice Diabetic Model.

## **Materials and Methods**

Methanol extract of *Catharanthus roseus* (Nayantara) and *Opuntia ficusindica* was used for assaying hypoglycemic activities in Streptozotocin induced mice diabetic models. These two plant species were collected from campus of College of Commerce, Patna and identified following relevant monographs of Indian Pharmacopoeia (2012). Freshly harvested plant materials (root, stem, leaves and flowers) were washed under running tap water, blotted with filter paper and was dried in the shade at room temperature.

The dried plant sample (2.6 kg) was then soaked with absolute methanol under reflux condition for the methanolic extract preparation. The sample was then homogenized with extraction buffer and the supernatant collected after three rounds of extraction. The solvent was evaporated under reduced pressure in a rotary evaporator at 40 °C. To this thick paste colloidal silicon dioxide was added and dried in vacuum tube



dryer. The obtained methanol extract was stored in deep freezer at  $-20^{\circ}\text{C}$  until further test.

Significant insights into the etiology of diabetes in human have been gained from the study of animal models. The albino mouse is an excellent model for study of human diabetes. Therefore all mice used in this study were in the albino genetic background. Adult albino mice weighing around 17–20 gram with  $6.5 \pm 0.5$  cm length are selected for experiments.

The mice were housed in shoe-box type cages under good hygienic conditions in the departmental animal house during experimental period. The mice were allowed to acclimatize for 15 days in an environmentally controlled room under standard environmental conditions ( $21 \pm 2^{\circ}\text{C}$ ,  $55 \pm 5\%$  Relative humidity, 12 hr Light: Dark cycle).

The mice were fed on diet consisted of wheat grains-1Kg, Choker wheat-250gm, Gram grains-250gm, Maize grains-250gm, Soybean grains-250gm, Sundrop oil-50gm, Milk powder-2 table spoon and Jaggery-50gm. This diet provided carbohydrate 48.3%, crude protein 23.5%, crude fat 5.9%, crude ash 5.9% and crude fibre 3.9% (W/W).

In each cage one pellet of feed per mice was given. The diet was palatable to the animal as evidenced by feeding success. It has been observed that an adult mice normally intakes 4 to 5 gram of diet per day. The daily food consumption of the mice varied depending upon the physiological and health status of the mice as well as the environmental temperature. The consumption of food increased considerably when the mice were pregnant or at lactating stage and decreased considerably with the dose-duration and increased temperature in summer.

The animal model for the present study was based on multiple administration of low dose of freshly prepared streptozotocin (STZ). For induction of diabetes, initially the normal mice were kept 24 hours without food and water. The weight of normal mice was determined. Diabetes was induced by multiple intra-peritoneal injection of freshly prepared STZ solution in 0.05 M sodium citrate (pH 4.5) at the dose of 35 mg/kg body weight followed by an hour of fasting. The mice were then allowed to access the respective food and water *ad libitum*. Mice with fasting blood glucose level of 200 mg/dl (7.8 mmol/l) or higher were considered to be diabetic and were used in the study. A parallel set of control mice (non-diabetic) were injected with citrate buffer only.

The mice were grouped into five categories viz., Normal control (NC), Diabetic Control (DC), Diabetic Treated ( $\text{DT}_{150}$ ), Diabetic Treated ( $\text{DT}_{250}$ ) and Diabetic Treated ( $\text{DT}_{\text{RZG}}$ ). NC received only citrate buffer solution. DC group was STZ induced which received citrate buffer only.  $\text{DT}_{150}$  and  $\text{DT}_{250}$  received 150mg/Kg and 250mg/Kg body weight of methanol extract respectively.  $\text{DT}_{\text{RZG}}$  received rosiglitazone at a dose of 2mg/Kg of body weight. All the mice were fed with common pellet diets for 2 weeks after arrival, and then randomly divided into two groups. One group continued to receive common pellet diets and constituted the normal group; the other was fed with diets high in fat and fructose, in order to induce type-2 diabetes. All the mice had free access to food and water.

For the experiment, the mice were divided into five groups having six mice in each group: DC group (diabetic control mice), NC group (non-diabetic control mice) and three DT group (diabetic mice treated with two different doses of extract as well as rosiglitazone/ kg body weight). Body weights were recorded weekly during the

experimental period. Treatment with extracts was started after one week of STZ treatment, which was considered as the 1<sup>st</sup> day of treatment. Blood samples were taken after 8 hrs fasting from the retro-orbital sinus vein prior to the administration of test substances or the buffer and 4 weeks after the treatment under mild ether anesthesia and allowed to clot for 30 minutes at room temperature. Blood samples were centrifuged at 3000 rpm for 20 minutes. Serum was separated and stored at -20°C until biochemical estimations were carried out.

Data were statically analyzed by mean  $\pm$  S.E and by one-way ANOVA.

The results related to body weight change and blood glucose level in mmol/l in mice during present course of investigation have been presented in tables 1–4 and figures 1–4.

## Results and Discussion

The whole plant extract of *Catharanthus roseus* and *Opuntia ficusindica* has been reported to be effective in alleviating diabetes mellitus through its antioxidant and insulin-potentiating activities (Okoli *et al.*, 2010). In the present investigation the effect of methanol extract of *Catharanthus roseus* and *Opuntia ficusindica* on body weight of mice was studied.

The results clearly indicated that the diabetic control (DC) mice presented a significant lowering of body weight ( $p < 0.001$ ) when compared with the normal control (NC) mice (Table 1 and 2; Figs. 1 and 2). A significant gain in body weight was observed in the treated groups of diabetic mice (DT<sub>150</sub> and DT<sub>250</sub>) as compared to the DC ones. The DT<sub>150</sub> and DT<sub>250</sub> group showed an increase of 30% and 40% in body weight respectively after 15 days of treatment. Contrary to this, DT<sub>RGZ</sub> group mice showed an increase of

50% in body weight after 15 days of treatment (Table 1 and 2; Figs. 1 and 2).

The changes in the blood glucose levels before and after receiving the treatment in normal and diabetic mice have been presented in tables 3 and 4 and figures 3 and 4. As expected, the DC mice showed a significantly ( $p < 0.001$ ) higher level of glucose (+279%), when compared with their normal control counterparts. Diabetic mice of both of the groups (DT<sub>150</sub> and DT<sub>250</sub>) showed a reduction in glucose levels, when compared to the DC ones; nevertheless, the reduction was particularly evident in the DT<sub>250</sub> mice (–44%;  $p < 0.001$ ). When compared, the glucose levels of the DT<sub>250</sub> versus the DC group mice during the 4-week treatment program, a significant lower value in the first was also found (–45%;  $p < 0.001$ ) respectively (Tables 2 and 4; Figs 3 and 4). Nevertheless, this decline in the glucose levels was less evident in the DT<sub>150</sub> mice (–38%) than in the DT<sub>250</sub> mice. In contrast to this, DT<sub>RGZ</sub> group mice showed almost 70% decline in glucose level after 4-weeks of treatment program (Tables 3 and 4; Figs. 3 and 4).

Phytochemicals from natural products possess potent antioxidant activity that are capable of prevention of the onset and/or progression of many human diseases by counteracting reactive oxygen species (ROS) (Palasuwan *et al.*, 2005; Cai *et al.*, 2006; Bouayed *et al.*, 2007; Liu *et al.*, 2007). It has been reported that the *Catharanthus roseus* possesses anticancer alkaloids Vinblastine and Vincristine, anti-diabetic property, anti-oxidant property, Anti helminthic property, Anti-ulcer property, Hypertensive property and Anti-diarrheal property (Monika Sain and Vandana Sharma, 2013). Similarly, phytochemicals of *Opuntia ficus-indica* equally possesses potent hypoglycemic activity (Hanane Dib *et al.*, 2013).

An alcoholic extract of both *Catharanthus roseus* and *Opuntia ficus-indica* was found to reduce significantly the blood sugar in normal mice and in STZ induced diabetes mice. In normal rats, administration of *C. roseus* and *O. ficus-indica* separately at the rate of 200mg/kg body weight reduced the blood sugar by 35.5 percent and to 48.5 percent at the concentration of 1000mg/kg by weight at 1 hour. However at 6th hour, values are almost similar to normal value. Continuous administration of the drug produced significant reduction in normal blood sugar in rats, which on 15th day was also found to reduce the blood sugar in alloxan diabetic rats. In short term experiment, drug was found to reduce the blood sugar at 4th hour by 6.07 percent at dose level of 200mg/kg by weight and 18.7 percent at concentration of 1000mg/kg by weight. Continuous administration of drug produced significant reduction in blood sugar in alloxan diabetic rats. On 15<sup>th</sup> day values were almost similar to normal in the group taking 1000 mg/kg by weight. Plant extract did not produce any toxicity as seen from liver and kidney function test and in hematological parameters.

The results indicated potential antidiabetic action of *C. roseus* and *O. ficus-indica*.

Diabetes has a significant impact on the health, quality of life and life expectancy of patients as well as healthcare expenditure. With increasing incidence and mortality from its complications, prompt and adequate glycemic control in diabetes is paramount if management can meaningfully improve the quality of life and increase life expectancy (Nyenwe *et al.*, 2011).

Several studies to test new drugs with potential antidiabetic activity were used in animal models of streptozotocin (STZ)-induced diabetes (Fröde and Madeiros, 2008). Although none of the chemically-induced diabetic models can reproduce the complexity of the human disease, they can be helpful to understand at least some aspects of the potential bioactivities of natural or synthetic products. We used diabetic albino mice induced by STZ (35 mg/kg body wt.), which was sufficient to induce a stable state of diabetic condition in this animal species.

**Table.1** Showing body weight changes in mice during and after treatment of methanol extract of *Catharanthus roseus*

Non Diabetic Normal Control (NC)	Day 0	Day7	Day15
		19.50±2.76	21.75±2.39
<b>Diabetic Mice</b>			
Diabetic Control (DC)	11.70±1.05	09.75±0.95	8.55±1.32
<i>C. roseus</i> extract (150mg/Kg) (DT <sub>150</sub> )	11.71±2.03*	12.12±1.67*	13.75±1.53*
<i>C. roseus</i> extract (250mg/Kg) (DT <sub>250</sub> )	11.68±1.63*	12.75±2.37*	15.85±2.67*
Rosiglitazone (2mg/Kg) (DT <sub>RGZ</sub> )	11.70±3.74*	15.85±3.91*	16.25±1.84*

\*significant as compared to control; n=6 in each group

**Table.2** Showing body weight changes in mice during and after treatment of methanol extract of *Opuntia ficusindica*

Non Diabetic Normal Control (NC)	Day 0	Day7	Day15
		19.50±2.76	21.75±2.39
<b>Diabetic Mice</b>			
Diabetic Control (DC)	11.75±1.05	10.25±0.95	9.57±1.32
<i>O.ficusindica</i> extract (150mg/Kg) (DT <sub>150</sub> )	11.80±2.03*	12.25±1.67*	14.25±1.53*
<i>O. ficusindica</i> extract (250mg/Kg) (DT <sub>250</sub> )	11.70±1.63*	12.75±2.37*	15.85±2.67*
Rosiglitazone (2mg/Kg) (DT <sub>RGZ</sub> )	10.75±3.74*	15.85±3.91*	17.05±1.84*

\*significant as compared to control; n=6 in each group



**Table.3** Showing effects of different doses of *C. roseus* extract and Rosiglitazone on blood glucose levels in mice

Mice Groups	Blood glucose levels in (mmol/l) in four different weeks				
	Pretreatment	Post-treatment			
	0	1	2	3	4
Normal control (NC)	4.25±0.13**	4.35±0.14**	4.30±0.25**	4.32±0.16**	4.25±0.19**
Diabetic control (DC)	14.75±1.55*	14.85±1.48*	14.78±1.59*	14.95±1.49*	14.94±1.48*
<i>C. roseus</i> extract (150mg/Kg) DT <sub>150</sub>	14.97±1.40	12.04±1.18*	10.64±2.09**	9.69±1.28**	9.27±1.79**
<i>C. roseus</i> extract (250mg/Kg) DT <sub>250</sub>	14.64±1.59	10.86±1.38**	8.65±1.28**	8.25±1.74**	8.15±1.28**
Rosiglitazone (2mg/Kg) DT <sub>RGZ</sub>	15.03±1.49	9.84±1.48**	5.57±1.28**	4.95±1.35**	4.97±0.97**

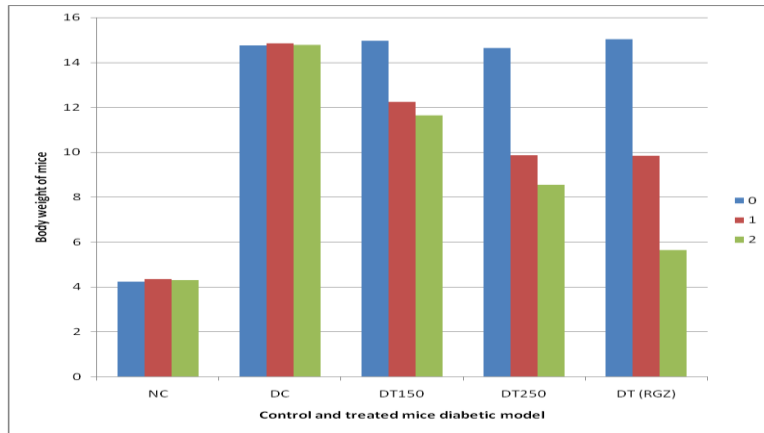
\*p<0.05 as compared with normal control. \*\*p<0.001 as compared with diabetic control.

**Table.4** Showing effects of different doses of *Opuntia ficusindica* extract and Rosiglitazone on blood glucose levels in mice

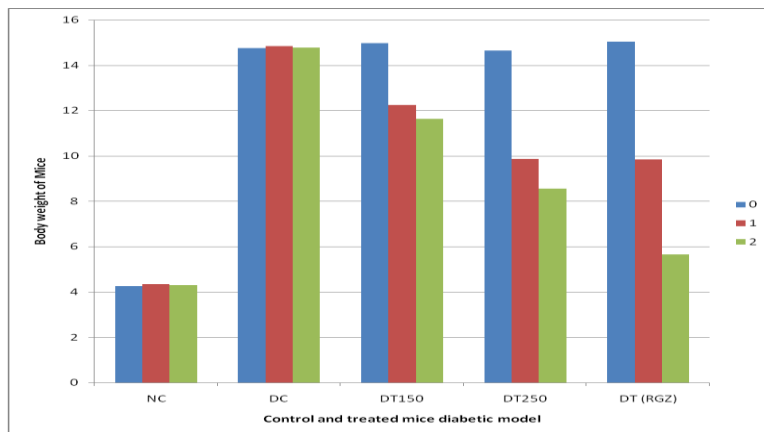
Mice Groups	Blood glucose levels in (mmol/l) in four different weeks				
	Pretreatment	Post-treatment			
	0	1	2	3	4
Normal control (NC)	4.25±0.13**	4.35±0.14**	4.30±0.25**	4.32±0.16**	4.25±0.19**
Diabetic control (DC)	14.75±1.55*	14.85±1.48*	14.78±1.59*	14.95±1.49*	14.94±1.48*
<i>C. roseus</i> extract (150mg/Kg) DT <sub>150</sub>	14.93±1.40	12.24±1.18*	11.64±2.09**	9.65±1.28**	9.25±1.79**
<i>C. roseus</i> extract (250mg/Kg) DT <sub>250</sub>	14.75±1.59	9.86±1.38**	8.55±1.28**	8.35±1.74**	8.25±1.28**
Rosiglitazone (2mg/Kg) DT <sub>RGZ</sub>	15.03±1.49	9.85±1.48**	5.65±1.28**	4.75±1.35**	4.85±0.97**

\*p<0.05 as compared with normal control. \*\*p<0.001 as compared with diabetic control.

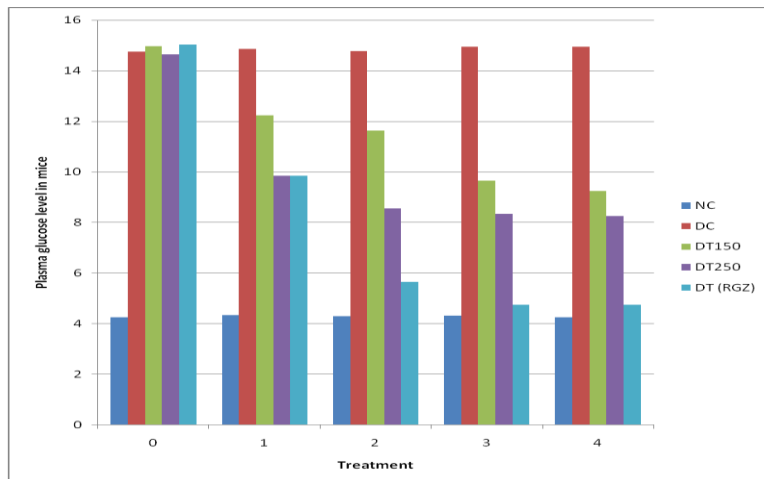
**Fig.1** Body weight changes in mice during and after treatment of methanol extract of *Catharanthus roseus*



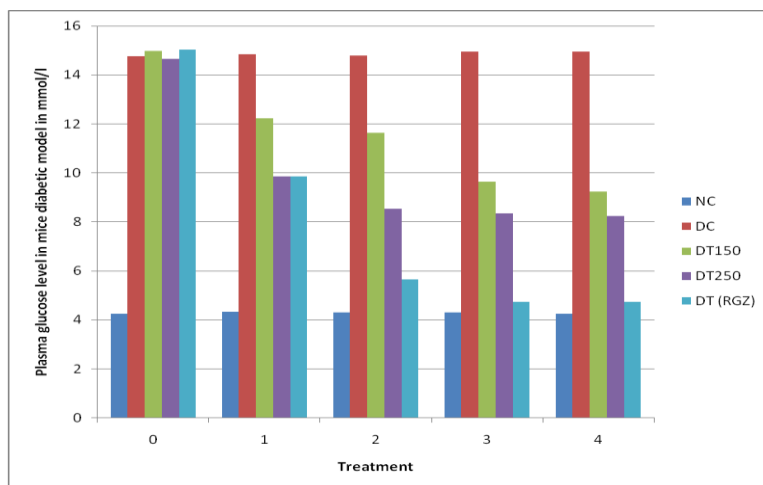
**Fig.2** Body weight changes in mice during and after Treatment of methanol extract of *Opuntia ficusindica*



**Fig.3** Effects of different doses of *Catharanthus roseus* extract and Rosiglitazone on blood glucose levels in mice



**Fig.4** Effects of different doses of *Opuntia ficusindica* extract and Rosiglitazone on blood glucose levels in mice



Induction of diabetes with streptozotocin is associated with a characteristic loss of body weight, which is probably due to muscle wasting. In our study there was a significant weight loss in the vehicle treated diabetic mice, whereas treatment with the *C. roseus* and *O. ficus- indica* extract at three doses showed improvement in their body weight, indicating that the methanolic extract had beneficial effect in preventing loss of body weight of diabetic mice. The probable mechanism of this benefit is due to its effect in controlling muscle wasting, *i.e.*, by reversal of antagonism. The metabolic disturbances were corrected after the plant extract was administered at the two different dose of 150 and 250 mg/kg body weight for four weeks as shown by a reduction in biochemical parameters in diabetic mice treated with plant extract. This result is in accordance with Lenzen (2008) and Chung *et al.*, (2003). They have found that multiple low dose of STZ sufficiently induce stabilized acute diabetes in which there is a progressive deterioration in the glucose tolerance and insulin secretion after the STZ injection. It ultimately causes increased oxidative stress, which play an important role in the pathogenesis of various complications.

At present, several drugs are available for the management of hyperglycemia but they are expensive and possess side effects also. Therefore, search for a suitable alternative is continued. For the developing countries herbal plants may be the most attractive target for their availability, low cost and better safety margin. The hypoglycemic activity of *Catharanthus roseus* and *Opuntia ficus-indica* has attracted many researchers to prove it scientifically and to investigate its mechanisms of actions. Hence, in the present study, the two defined doses of methanolic extract of whole plant of *C. roseus* and *O. ficus- indica* have been investigated for their antidiabetic potential.

Chronic hyperglycaemia in diabetes is a risk factor constantly fuelled by postprandial elevation of blood glucose. Control of postprandial hyperglycemia in diabetes is of great importance due to its close relation to the risk of micro and macro-vascular complications and death (Nyenwe *et al.*, 2011). In this study, experimental evaluation of the hypoglycemic potentials of *C. roseus* and *O. ficus- indica* has shown that the higher dose of extract (250 mg/kg body wt.) suppress postprandial rise in blood glucose levels more effectively than lower dose of extract (150

mg/kg body wt.) which is the index of effectual glycemic control. It may be due to alteration in the fiber content as well as phytochemical interactions which thereby altering the rate and speed of absorption of glucose from the gut. These favorable effects of *C. roseus* and *O. ficus-indica* extract may be attributed to higher affinity and synergistic action of their phytochemicals on multiple targets including PPAR- $\gamma$  activation and DPP-IV inhibition which may therefore regulate the hyperglycemia, lipogenesis and hypertriglyceridemia associated with diabetes (Shimizu *et al.*, 2003; Barnett, 2006).

The anti-oxidant and antidiabetic activity of *C. roseus* is due to the presence of its active phytoconstituents (Monika Sain and Vandana Sharma, 2013). It has been well documented that *C. roseus* contains vincristin, vinblastin and antidiabetic compounds as major active constituents (Monika Sain and Vandana Sharma, 2013).

In the hypoglycemic activity studies of methanol extract, daily oral administration of the extract for 28 days produced a gradual but sustained reduction in blood glucose levels in diabetic treated mice. Streptozotocin causes hyperglycaemia and glucose intolerance or syndromes similar to either type 1 or type 2 diabetes (Frode and Medeiros, 2008). Effective and sustained reduction in blood glucose levels of treated diabetic mice by the extract indicates that it may be useful in overt cases of diabetes. Treatment with the two doses of extract also reduced mortality of diabetic mice from hyperglycaemia and prolonged their survival. In this study, some of the diabetic non-treated control animals all died on day 10 post-induction of diabetes whereas the extract-treated group survived beyond the period of the experiment. Effective control of blood glucose level is a key step in preventing and reversing diabetic complications, and improving the quality of

life of diabetic patients (Bavarva and Narasimhacharya, 2008). Hence, chronic administration of the extract may cause a progressively sustained reduction in hyperglycaemia known to reduce the risk of complications associated with the disease.

From the results it can be concluded that the methanol extract of whole plant of *Catharanthus roseus* and *Opuntia ficus-indica* is antidiabetic in nature due to the presence of different types of active phytochemicals, which may have different mechanism of action. The combination of these phytochemicals, therefore, might be beneficial as hypoglycemic agents. The *C. roseus* and *O. ficus-indica* plant extract might be considered as a safe supplementary therapy for long-term and effective management of diabetic patients.

### **Acknowledgement**

The first author is thankful to Dr. Baidyanath Kumar, Visiting Professor, Department of Biotechnology, College of Commerce (MU), Patna for providing necessary suggestion for the preparation of this research article.

### **References**

- Anoop Misra and Naval K. Vikram (2002): Insulin resistance syndrome (metabolic syndrome) and Asian Indians, *CURRENT SCIENCE*, 83 (12), 1483- 1496.
- Ayurvedid Pharmacopoea (2001): Ministry of health and Family Welfare, Govt. of India.
- Bagalkotkar G, Sagineedu SR, Saad MS, Stanslas J. Phytochemicals from *Phyllanthus niruri* Linn. And their pharmacological properties: a review. *J Pharm Pharmacol.* 2006; 58: 1559e1570.
- Bailey CJ, Turner RC. Metformin. *N Engl J Med* 1996; 334: 574-9.
- Bakris G, Viberti G, Weston WM, Heise M, Porter LE, Freed MI. Rosiglitazone reduces urinary albumin excretion in type II diabetes. *J Hum Hypertens* 2003; 17(1):7-

- 12.
- Balamurugan AN, Miyamoto M, Wang W, Inoue K, Tabata Y(2003): Streptozotocin (STZ) used to induce diabetes in animal models. *J Ethnopharm*, 26:102-103.
- Bakalov VK, Cooley MM, Troendle J, Bondy CA(2004): The prevalence of diabetes mellitus in the parents of women with Turner's syndrome. *Clin Endocrinol (Oxf)* 60:272.
- Bayraktar M, Van Thiel DH, Adalar N. A comparison of acarbose versus metformin as an adjuvant therapy in sulfonylurea-treated NIDDM patients. *Diabetes Care* 1996; 19: 252-4.
- Bavarva JH, Narasimhacharya AVR. Antihyperglycemic and hypolipidemic effects of *Costus speciosus* in alloxan induced diabetic rats. *Phytother Res* 2008; 22: 620-626.
- Barnett A. DPP-4 inhibitors and their potential role in the management of type 2 diabetes. *Int J Clin Pract* 2006; 60(11): 1454–70.
- Beck- Nielsen, H. and Groop, L. C. (1994): *J. Clin. Invest*, 94, 1714- 1721.
- Bell DSH. Beta-cell rejuvenation with thiazolidinediones. *Am J Med* 2003; 115: 20S-3S.
- Bouayed J, Piri K, Rammal H, Dicko A, Desor F, Younos C, Soulamani R. Comparative evaluation of the antioxidant potential of some Iranian medicinal plants. *Food Chem* 2007; 104 (1): 364-368
- Brosky G, Logothetopoulos J (1969): Streptozotocin diabetes in the mouse and guinea pig. *Diabetes*, 8:606-611.
- Cai, YZ, Mei S, Jie X, Luo Q, Corke H. Structure-radical scavenging activity relationships of phenolic compounds from traditional Chinese medicinal plants. *Life Sci* 2006; 78(25): 2872-2888.
- Chang CC, Lien YC, Liu KC, Lee SS. Lignans from *Phyllanthus urinaria*. *Phytochem* 2003; 63: 825–833.
- Elder DA, Kaiser- Roger K, Aylsworth AS and Calikoglu (2001): Type I diabetes mellitus in a patient with chromosome 22q11.2 deletion syndrome. *Am J Med Genet*, 101 (1): 17- 19.
- Fröde TS, Medeiros YS. Animal models to test drugs with potential antidiabetic activity. *J Ethnopharmacol* 2008; 115: 173-183.
- Finegood DT, McArthur MD, Kojwang D, Thomas MJ, Topp BG, Leonard T, *et al.*, Beta-cell mass dynamics in Zucker diabetic fatty rats: rosiglitazone prevents the rise in net cell death. *Diabetes* 2001; 50(5): 1021-9.
- Grover JK, Vats V. Shifting paradigm: From conventional to alternative medicines— an introduction on traditional Indian medicines. *Asia Pacific Biotech News* 2001; 5: 28-32.
- Grover JK, Yadav SP. "Pharmacological actions and potential uses of *Momordica charantia*: A review". *J Ethnopharmacol* 2004; 93(1): 123–132.
- Guerciolini R. Mode of action of orlistat. *Int J Obes* 1997; 21(suppl 3): S12-S23.
- G.B. Kavishankar, N. Lakshmidhevi, S. Mahadeva Murthy, H.S. Prakash, S.R. Niranjana (2011): Diabetes and medicinal plants-A review *Int J Pharm Biomed Sci* 2011, 2(3), 65-80
- Hanane Dib, M. Chokri Beghdad and Meriem Belarbi (2013): Phytochemical study of Algerian *Opuntia ficus-indica*, *Annals of Biological Research*, 4 (2):185-189
- Hatorpe V. Clinical pharmacokinetics and pharmacodynamics of repaglinide. *Clin Pharmacokinet* 2002; 41: 471-83.
- Hanefeld M, Sachse G. The effects of orlistat on body weight and glycaemic control in overweight patients with type 2 diabetes. *Diabetes Obes Metab* 2002; 4: 415-23.
- Herz M, Johns D, Reviriego J, Grossman LD, Godin C, Duran S, *et al.*, A randomized, double-blind, placebo-controlled, clinical trial of the effects of pioglitazone on glycemic control and dyslipidemia in oral antihyperglycemic medication-naive patients with type 2 diabetes mellitus. *Clin Ther* 2003; 25(4): 1074-95.
- Hollander PA, Elbein SC, Hirsch IB, Kelley D, McGill J, Taylor T, *et al.*, Role of orlistat in the treatment of obese patients with type 2 diabetes. *Diabetes Care* 1998; 21(8):1288-94.
- Holmes BF, Kurth-Kraczek EJ, Winder WW. Chronic activation of 5'-AMP-activated protein kinase increases GLUT-4, hexokinase, and glycogen in muscle. *J Appl*



- Physiol* 1999; 87:1990-5.
- Hayashi K, Kojima R, Ito M (2006): Strain differences in the diabetogenic activity of streptozotocin in mice. *Biol Pharmaceut Bull*, 29:1110-1119.
- Heinrich M, Barnes J, Gibbons S, Williamson EM. Fundamentals of Pharmacognocny and Phytotherapy. Churchill Livingston, Elsevier Science Ltd, U.K 2012.
- Inzucchi SE. Oral antihyperglycemic therapy for type 2 diabetes. *JAMA* 2002; 287:360-72.
- Iyer, R., Upasani, S. and Baitule, M. N. (2000): *ibid*, 50, 519, Suppl. 1.
- Ikebukuro K, Adachi Y, Yamada Y, Fujimoto S, Seino Y, Oyaizu H (2002): Treatment of Streptozotocin-induced diabetes mellitus by transplantation of islet cells Plus bone Marrow cells via portal vein in rats. *Transplantation*, 73:512-518.
- Ito M (1999): New model of progressive non-insulin-dependent diabetes mellitus in mice induced by Streptozotocin. *Biol Pharmaceut Bull*, 22:988-989.
- Indian Pharmacopoea (2014): Ministry of Health and Family Welfere, Govt. of India
- Jada SR, Hamzah AS, Lajis NH, Saad MS, Stevens MF, Stanslas J. Semisynthesis and cytotoxic activities of andrographolide analogues. *J Enzyme Inhib Med Chem* 2006; 21:145–155.
- Kelly IE, Hans TS, Walsh K, Lean ME. Effects of a thiazolidinediones compound on body fat and fat distribution of patients with type 2 diabets. *Diabetes Care* 1999; 22:288-93.
- Kelley DE, Bray GA, Pi-Sunyer FX, Klein S, Hill J, Miles J, *et al.*, Clinical efficacy of orlistat therapy in overweight and obese patients with insulin-treated type 2 diabetes: a 1-year randomized controlled trial. *Diabetes Care* 2002; 25 (6): 1033-41.
- Knowler WC, Barrett-Connor E, Fowler SE, Hamman RF, Lachin JM, Walker EA, *et al.*; Diabetes Prevention Program Research Grou9. Reduction in the incidence of type 2 diabetes with lifestyle intervention or metformin. *N Engl J Med* 2002; 346(6):393-403.
- Klepzig H, Kober G, Matter C, Luus H, Schneider H, Boedeker KH, *et al.*, Sulfonylureas and ischaemic preconditioning: a double-blind, placebo-controlled evaluation of glimepiride and glibenclamide. *Eur Heart J* 1999; 20(6): 403-5.
- Kirpichnikov D, McFarlane SI, Sowers JR. Metformin: an update. *Ann Intern Med* 2002; 137:25-33.
- Knowler WC, Barrett-Connor E, Fowler SE, Hamman RF, Lachin JM, Walker EA, *et al.*; Diabetes Prevention Program Research Grou9. Reduction in the incidence of type 2 diabetes with lifestyle intervention or metformin. *N Engl J Med* 2002; 346(6):393-403.
- Kirpichnikov D, McFarlane SI, Sowers JR. Metformin: an update. *Ann Intern Med* 2002; 137:25-33.
- Klepzig H, Kober G, Matter C, Luus H, Schneider H, Boedeker KH, *et al.*, Sulfonylureas and ischaemic preconditioning: a double-blind, placebo-controlled evaluation of glimepiride and glibenclamide. *Eur Heart J* 1999; 20(6): 403-5.
- Kelly IE, Hans TS, Walsh K, Lean ME. Effects of a thiazolidinediones compound on body fat and fat distribution of patients with type 2 diabets. *Diabetes Care* 1999; 22:288-93.
- King, H., Aubert, R. E. and Herman, W. H. (1998): *Diab. Care*, 21, 1414- 1431.
- Khanna (2001): *Int. J. Obesity*, 25, 1- 8.
- Kelley DE, Bray GA, Pi-Sunyer FX, Klein S, Hill J, Miles J, *et al.*, Clinical efficacy of orlistat therapy in overweight and obese patients with insulin-treated type 2 diabetes: a 1-year randomized controlled trial. *Diabetes Care* 2002; 25 (6): 1033-41.
- Lebovitz HE. Alpha-glucosidase inhibitors. *Endocrinol Metab Clin North Am* 1997; 26: 539-51.
- Lebovitz HE. Oral therapies for diabetic hyperglycemia. *Endocrinol Metab Clin North Am* 2001; 30; 909-33.
- Lenzen S. The mechanisms of alloxan- and streptozotocin- induced diabetes. *Diabetologia* 2008; 51 (2): 216-26.
- Lee CH, Olson P, Evans RM. Minireview: lipid metabolism, metabolic diseases, and peroxisome proliferators-activated receptors. *Endocrinology* 2003; 144: 2201-2207.
- Lin Y, Sun Z. Current views on type 2 diabetes. *J Endocrinol* 2010; 204: 1-11.
- Lister CA, Moore GBT, Piercy V, *et al.*,

- Rosiglitazone, but not metformin or glibenclamide, improves glycaemic control and increases islet insulin content. *Diabetologia* 1999; 42(suppl 1):A150.
- Liu X, Dong M, Chen X, Jiang M, Lv X, Yan G. Antioxidant activity and phenolics of an endophytic *Xylaria* sp. from *Ginkgo biloba*. *Food Chem* 2007; 105(2): 548-554.
- Lorke D. A new approach to practical acute toxicity testing. *Arch Toxicol* 1983; 54: 275-287.
- Manisha Modak, Priyanjali Dixit, Jayant Londhe, Saroj Ghaskadbi, and Thomas Paul A. Devasagayam (2007): Indian Herbs and Herbal Drugs Used for the Treatment of Diabetes *J Clin Biochem Nutr.*; 40(3): 163–173.
- Mellinger CG, Cipriani TR, Noletto GR, Carbonero ER, Oliveira MB, Gorin PA, Iacomini M. Chemical and immunological modifications of an arabinogalactan present in tea preparations of *Phyllanthus niruri* after treatment with gastric fluid. *Int J Biol Macromol* 2008; 43(2): 115-120.
- Mellinger C G, Carbonero ER, Cipriani TR, Gorin PA, Iacomini M. Xylans from the medicinal herb *Phyllanthus niruri*. *J Nat Prod* 2005a; 68: 129–132.
- McLeod JF. Clinical pharmacokinetics of nateglinide. *Clin Pharmacokinet* 2004; 43:97-120.
- McLeod JF. Clinical pharmacokinetics of nateglinide. *Clin Pharmacokinet* 2004; 43:97-120.
- Misra, A., Pandey, R. M., Rama Devi, J., Sharma, R., Vikram, N. K. and Nidhi
- Verma, N. P. S. and Madhu, S. V (2000): *Diab. Res. Clin. Prac*, 50, 615, Suppl. 1.
- Mohan, V., Shanthirani, S., Deepa, R., Premalatha, G., Sastry, N. G. and Saroja, R (2001): *Diab. Med.*, 18, 280- 287.
- Mohan, V., Shanthirani, S., Deepa, R., Premalatha, G., Sastry, N. G. and Saroja, R (2001): *Diab. Med.*, 18, 280- 287.
- Mohler ML, He Y, Wu Z, Dong JH, Miller DD. Recent and emerging anti-diabetes targets. *Med Res Rev* 2009; 29: 125-195.
- Mokhtari D, Myers JW, Welsh N (2008): MAPK kinase kinase-1 is essential for cytokine-induced c-Jun NH2-terminal kinase and nuclear factor- $\kappa$ B activation in human pancreatic islet cells. *Diabetes* 57:1896–1904.
- Mushtaq Ahmad, Rahmatullah Qureshi, Muhammad Arshad, Mir Ajab Khan and Muhammad Zafar. 2009. Traditional herbal remedies used for the treatment of diabetes from district attock (Pakistan) *Pak. J. Bot.*, 41(6): 2777-2782, 2009.
- Mohler ML, He Y, Wu Z, Dong JH, Miller DD. Recent and emerging anti-diabetes targets. *Med Res Rev* 2009; 29: 125-195.
- Monika Sain, Vandana Sharma (2013): *Catharanthus roseus* (An anti-cancerous drug yielding plant) - A Review of Potential Therapeutic Properties, *Int. J. Pure App. Biosci.* 1 (6): 139-142
- M.Upendra Rao, M.Sreenivasulu, B.Chengaiiah, K.Jaganmohan Reddy, C.Madhusudhana Chetty (2010): Herbal Medicines for Diabetes Mellitus: A Review. *International Journal of PharmTech Research* Vol.2, No.3, pp 1883-1892
- Neve B, Fernandez-Zapico ME, Ashkenazi-Katalan V, Dina C, Hamid YH, Joly E, Vaillant E, Benmezroua Y, Durand E, Bakaher N, Delannoy V, Vaxillaire M, Cook T, Dallinga-Thie GM, Jansen H, Charles MA, Clément K, Galan P, Hercberg S, Helbecque N, Charpentier G, Prentki M, Hansen T, Pedersen O, Urrutia R, Melloul D, Froguel P (2005): Role of transcription factor KLF11 and its diabetes-associated gene variants in pancreatic  $\beta$  cell function. *Proc Natl Acad Sci USA* 102:4807–4812
- Nesto RW, Bell D, Bonow RO, Fonseca V, Grundy SM, Horton ES, *et al.*, American Heart Association; American Diabetes Association. Thiazolidinedione use, fluid retention, and congestive heart failure: a consensus statement from the American Heart Association and American Diabetes Association. *Circulation* 2003; 108(23):2941-8.
- Nyenwe EA, Jerkins TW, Umpierrez GE, Kitabchi AE. Management of type 2 diabetes: evolving strategies for the treatment of patients with type 2 diabetes. *Metabolism* 2011; 60:1-23.
- Okoli CO, Ibiam AF, Ezike AC, Akah PA, Okoye TC. Evaluation of antidiabetic potentials of *Phyllanthus niruri* in alloxan diabetic rats.

- Afr J Biotechnol* 2010; 9(2): 248-259.
- Pallab Das Gupta and Amartya De (2012): Diabetes Mellitus and its Herbal Treatment International Journal of Research in Pharmaceutical and Biomedical Sciences Vol. 3 (2), 706- 721.
- Palasuwan A, Soogarun S, Lertlum T, Pradniwat P, Wiwanitkit V. Inhibition of Heinz body induction in an *in vitro* model and total antioxidant activity of medicinal Thai plants. *Asian Pac J Cancer Prev* 2005; 6: 458-463.
- Rakesh Kumar Singh, Dolly Jaiswal, Prashant Kumar Rai, (2009): Anti-diabetic activity of *Embllica officinalis* in animal models.
- Raman Kutty, Soman, C. Rt., Joseph, A., Pisharody, R. and Vijayakumar, K. (2000): *Natl. Med. J. India*, 13, 287- 292.
- Ramachandran A, C. Snehalata and Vijay Viswanathan (2002): Burden of type 2 diabetes and its complications- The Indian scenario, *CURRENT SCIENCE*, 83(12), 1471- 1476.
- Reaven, G. M. (1988): Role of insulin resistance in human disease. *Diabetes*, 37, 1595-1607.
- Rebecca J Gardner, Andrew J Mungall, Ian Dunham, John C K Barber, Julian P H Shield, I Karen Temple, David O Robinson (1999): Localization of a gene for transient neonatal diabetes mellitus to an 18.72 cR3000 (□5.4 Mb) interval on chromosome 6q, *J Med Genet*;36:192–196.
- Raphael KR, Sabu MC. Antidiabetic activity of *Phyllanthus niruri*, *Amala research bulletin* 2000; 20: 19-25.
- Sharma H, Chandola HM. Prameha in Ayurveda: correlation with obesity, metabolic syndrome, and diabetes mellitus. Part 2--management of Prameha. *J Altern Complement Med* 2011; 17(7):589-99.
- Shimizu S, Ugi S, Maegawa H, Egawa K, Nishio Y, Yoshizaki T, Shi K, Nagai Y, Morino K, Nemoto K. Protein-tyrosine phosphatase I B as new activator for hepatic lipogenesis via sterol regulatory element-binding protein-1 gene expression. *J Biol Chem* 2003; 278: 430-95.
- Strom BL, Schinnar R, Apter AJ, Margolis DJ, Lautenbach E, Hennessy S, *et al.*, Absence of cross-reactivity between sulfonamide antibiotics and sulfonamide nonantibiotics. *N Engl J Med* 2003; 349(17): 1628-35.
- Smith SB, Prior RL, Mersmann HJ (1983): antibiotics and sulfonamide nonantibiotics. *N Engl J Med* 2003; 349(17): 1628-35.
- Salpeter S, Greyber E, Pasternak G, Salpeter E. Risk of fatal and nonfatal lactic acidosis with metformin use in type 2 diabetes mellitus. [Cochrane review]. In: The Cochrane Library; Issue 4, 2004. Oxford: Update Software
- Santwana Rani and Baidyanath Kumar (2015): Glycemic control efficacy of *Phyllanthus niruri*. Linn extract in Diabetic Mice model *Int.J.Curr.Microbiol.App.Sci*, 4(4): 599-609
- Sharma H, Chandola HM. Prameha in Ayurveda: correlation with obesity, metabolic syndrome, and diabetes mellitus. Part 2--management of Prameha. *J Altern Complement Med* 2011; 17(7):589-99.
- Salpeter S, Greyber E, Pasternak G, Salpeter E. Risk of fatal and nonfatal lactic acidosis with metformin use in type 2 diabetes mellitus. [Cochrane review]. In: The Cochrane Library; Issue 4, 2004. Oxford: Update Software
- Shukla R., Sharma S. B., Buri D., Probhu K. M.(2000): Medicinal plants for the treatment of Diabetes Mellitus, *Indian J Clin Biochem*, 15 P: 169
- Salgin B, Amin R, Yuen K, Williams RM, Murgatroyd P, Dunger DB (2006): Insulin resistance is an intrinsic defect independent of fat mass in women with Turner's syndrome. *Horm Res* 65:69–75.
- Song B, Scheuner D, Ron D, Pennathur S, Kaufman RJ (2008): Chop deletion reduces oxidative stress, improves  $\beta$  cell function, and promotes cell survival in multiple mouse models of diabetes. *J Clin Invest* 118:3378–3389
- Senée V, Chelala C, Duchatelet S, Feng D, Blanc H, Cossec JC, Charon C, Nicolino M, Boileau P, Cavener DR, Bougnères P, Taha D, Julier C (2006): Mutations in GLIS3 are responsible for a rare syndrome with neonatal diabetes mellitus and congenital hypothyroidism. *Nat Genet* 38:682–687.
- Strom BL, Schinnar R, Apter AJ, Margolis DJ, Lautenbach E, Hennessy S, *et al.*, Absence of cross-reactivity between sulfonamide antibiotics and sulfonamide nonantibiotics. *N Engl J Med* 2003; 349(17): 1628-35.
- Smith SB, Prior RL, Mersmann HJ (1983):

- Interrelationship between insulin and lipid metabolism in normal and alloxan-diabetic cattle. *J Nutr*, 113:1002-1015.
- Suheir Assady (2009): Challenges and Prospects for Stem Cell-Based Therapy in Diabetes Mellitus israel medical association world fellowship conference VOL 11, 2009.
- Suresh Kumar, Rajeshwar Singh, Neeru Vasudeva and Sunil Sharma (2012): Acute and chronic animal models for the evaluation of anti-diabetic agents, *Cardiovascular Diabetology* 2, 11:9
- Szkudelski T (2001): The mechanism of alloxan and streptozotocin action in B cells of the rat pancreas. *Physiol Res*, 50:537-46.
- Takeshita F, Kodama M, Yamamoto H, Ikarashi Y, Ueda S, Teratani T, Yamamoto Y, Tamatani T, Kanegasaki S, Ochiya T, Quinn G (2006): Streptozotocin induced partial beta cell depletion in nude mice without hyperglycaemia induces pancreatic morphogenesis in transplanted embryonic stem cells. *Diabetologia*, 49:2948-58.
- Torben Hansen (2002): Genetics of Type 2 diabetes, *CURRENT SCIENCE*, 83(12), 1477- 1482.
- Tuomilehto J, Lindstrom J, Eriksson JG, Valle TT, Hamalainen H, Ilanne-Parikka P, *et al.*; Finnish Diabetes Prevention Study Group. Prevention of type 2 diabetes mellitus by changes in lifestyle among subjects with impaired glucose tolerance. *N Engl J Med* 2001; 344(18):1343-50.
- Tuomilehto J, Lindstrom J, Eriksson JG, Valle TT, Hamalainen H, Ilanne-Parikka P, *et al.*; Finnish Diabetes Prevention Study Group. Prevention of type 2 diabetes mellitus by changes in lifestyle among subjects with impaired glucose tolerance. *N Engl J Med* 2001; 344(18):1343-50.
- The Indian Pharmacopoeia, 2012. <http://ipc.nic.in>
- Vladimir K. Bakalov, Clara Cheng, Jian Zhou and Carolyn (2009): X-Chromosome Gene Dosage and the Risk of Diabetes in Turner Syndrome *J Clin Endocrinol Metab.*; 94(9): 3289–3296
- World Health Organization. Diabetes Fact Sheet Number 312 2006; [www.who.org](http://www.who.org).
- Wadkar K.A., Magdum C.S., Patil S.S.(2008): “Antidiabetic Potential and Indian Medicinal plants- A Review Article”, *Journal of Herbal Medicine*
- Zhao L, Guo M, Matsuoka TA, Hagman DK, Parazzoli SD, Poutout V, Stein R (2005): The islet  $\beta$  cell-enriched MafA activator is a key regulator of insulin gene transcription. *J Biol Chem* 280:11887–11894.
- Zhou G, Myers R, Li Y, Chen Y, Shen X, Fenyk-Melody J, *et al.*, Role of AMP-activated protein kinase in mechanism of metformin action. *J Clin Invest* 2001; 108(8):1167-74.
- Zhijun Song, Helle Krogh Johansen, Viggo Faber, Claus Moser, Arsalan Kharazmi, Jorgen Rygaard, And Niels Hoiby (1997): Ginseng Treatment Reduces Bacterial Load and Lung Pathology in Chronic *Pseudomonas aeruginosa* Pneumonia in Rats, *Antimicrobial Agents and Chemotherapy*, 41 (5), 961- 964.
- Zimmet, P. Z. (1999): Diabetes epidemiology as a tool to trigger diabetes research and care. *Diabetologia*, 42, 499- 518.

#### How to cite this article:

Shilpi Jaya and Baidyanath Kumar. 2017. Hypoglycemic Efficacy of *Catharanthus roseus* and *Opuntia ficusindica* in Mice Diabetic Model. *Int.J.Curr.Microbiol.App.Sci*. 6(7): 1193-1209. doi: <https://doi.org/10.20546/ijcmas.2017.607.145>