

Original Research Article

<https://doi.org/10.20546/ijcmas.2017.605.153>

Proximate Constitution and Antiproliferative Activity of *Pleurotus opuntiae* (Durieu and Lev.) Sacc. against Colon Cancer

P.J. Krishnapriya* and D. Geetha

Department of Plant Pathology, College of Agriculture,
Kerala Agricultural University, Trissur, India

*Corresponding author

ABSTRACT

Pleurotus opuntiae owing to its short duration, pure white nature and ability to utilise the locally available substrates make it a promising oyster mushroom species, which can revolutionize the mushroom farming. The particular variety, isolated from arecanut tree (*Areca catechu* L.) logs was confirmed by ITS sequencing and registered at Genbank database (accession number: KY214255). Awareness of the nutritional and medicinal importance of *P. opuntiae* is not extensive. Proximate constituents of the harvested sporocarps, viz., moisture, carbohydrates, protein, fat, fibre, ash, lipids and polysaccharides viz., cellulose, starch, reducing sugars were analysed. The results indicated the presence of significant nutritional quantities viz., high amount of moisture (90.70%), carbohydrates (46.13%), protein (19.96%), fat (2.2%), fibre (9.68%), ash (6.09%), lipids (3.88%), cellulose (11.26), starch (7.5) and reducing sugars (6.31%). Anti-cancer activity of the mushroom, was analysed using MTT (Microculture Tetrazolium Assay), against HT-29 (human colon adenocarcinoma) cell line at five different concentrations of dried mushroom extract (6.25, 12.5, 25, 50, 100µg/ml). Dried extract of mushroom at 100µg/ml, recorded the highest anti-proliferative effect, with least absorbance (0.641) at 540 nm and minimum cell viability (29.27%). Rounding or shrinking of cells, granulation and vacuolization in the cytoplasm of the cancer cell lines were observed as indicators of cytotoxicity.

Keywords

Pleurotus opuntiae,
proximate
constituents,
anticancer,
MTT assay.

Article Info

Accepted:
17 April 2017
Available Online:
10 May 2017

Introduction

Mushroom is a macrofungus with a distinctive fruiting body which can be either epigeous or hypogeous and large enough to be seen with naked eye and picked by hand (Elliott, 1985). Mushrooms have long been appreciated as an important source of bioactive compounds of medicinal value. The nutritional value of mushrooms depends on their chemical composition. *Pleurotus* mushroom, generally referred as the 'oyster mushroom' or 'Dhingri', is the well

appreciated one in Kerala, for its broad adaptability under diverse agro-climatic conditions. Oyster mushrooms are generally considered nutraceutical and are rich in antioxidants, dietary proteins, fibres, vitamins and minerals. There are 15 to 20 species of oyster mushrooms available for cultivation in Kerala, of which the popular ones are *Pleurotus florida*, *Pleurotus sajorcaju* and *Pleurotus citrinopileatus*.

A new addition to the *Pleurotus* family, is the newly identified *Pleurotus opuntiae*, with the shortest duration among the *Pleurotus* genus. Sporocarp masses of *Pleurotus opuntiae* looked so much like angelic wings flapped around the mushroom beds. Sporocarps are stark white, delicately fringed at the edges, borne on short stalks. Also, a characteristic thick white patch can be seen at the centre of sporocarps.

Mushrooms have a great nutritional value since they are quite rich in protein, essential amino acids, fiber and poor in fat. It is a good source of vitamin B-complex and Vitamin C. It is the only vegetable source of Vitamin D. It is rich in minerals like copper (cardio-protective) and Selenium (anti-cancer) (Kakon *et al.*, 2012).

Cancer, medically known as malignant neoplasm, is a broad group of diseases involving unregulated cell growth. In cancer, cells divide and grow uncontrollably, forming malignant tumors, and invading multiple organs. Cancer is a leading cause of death worldwide. Many management options for cancer are available, *viz.*, surgery, chemotherapy, radiation therapy and palliative care. Treatment options often are expensive and have side effects. This situation has resulted, in the search for new antitumor substances, from various natural sources for effective and safer control (Chung *et al.*, 2010).

Many compounds have been isolated from mushrooms with anti-tumour effects such as, lentin, a polysaccharide isolated from *Lentinusedodes*, against sarcoma and hepatoma cells (Yamaguchi *et al.*, 2011). The bioactive compounds of mushrooms can complement classical cancer therapy and counter the side-effects of cancer, such as nausea, bone marrow suppression, anaemia etc.

In this context, the present study aims at the estimation of proximate constituents of oyster mushroom- *P. opuntiae*. Here, MTT assay was used to determine cytotoxic effect of the dried mushroom extract, in order to define whether active compounds destabilize the membrane or inhibit mitochondrial activity.

Materials and Methods

Sample collection

The particular variety, isolated from arecanut tree (*Areca catechu* L.) logs was confirmed by ITS sequencing, using universal primers of ITS and registered at Genbank database (accession number: KY214255). The isolate was brought into pure culture on potato dextrose agar medium, followed by spawn preparation on paddy grains. Cultivation trials were undertaken with paddy straw as substrate, using polybag method of cultivation. Fully matured sporocarps were harvested and kept for moisture estimation. Another set of sporocarps were cleaned with distilled water, mechanically dried and powdered, for the estimation of other proximate constituents.

Estimation of proximate constituents

Estimation of proximate constituents *viz.*, protein, moisture, carbohydrates, fat, fibre, lipid, and ash were done, using AOAC procedures (AOAC, 1995) method. Estimation of moisture content was done on fresh weight basis. All the other analysis was done on dry weight basis.

Estimation of polysaccharides

Estimation of polysaccharides were done *viz.*, starch by anthrone reagent (Hodge and Hofreiter, 1962), cellulose (Updegroff, 1969) and reducing sugar by dinitrosalicylic acid method (Miller, 1972), using dried, powdered mushroom sample.

Anticancer/*in vitro* antiproliferative effect by MTT ASSAY

Maintenance of human colon cancer cell line

Human colon carcinoma cell line was used to test the cytotoxic activity of *P. opuntiae* dried mushroom extract. HT-29 (human colon adenocarcinoma) cell line was initially procured from National Centre for Cell Sciences (NCCS), Pune, India and maintained in Dulbecos modified Eagles medium (DMEM) (Gibco, Invitrogen). The cell line was cultured in 25 cm² tissue culture flask containing DMEM, supplemented with 10% FBS, L-glutamine, sodium bicarbonate and antibiotic solution containing: penicillin (100µg /ml), streptomycin (100µg/ml), and amphotericin B (2.5µg/ml). Cultured cell lines were kept at 37°C in a humidified 5% CO₂ incubator (NBS Eppendorf, Germany).

The viability of cells was evaluated by direct observation of cells by Inverted phase contrast microscope, followed by MTT assay method.

Cells seeding in 96 well plate

Two days old confluent monolayer of cells was trypsinized and the cells were suspended in 10% growth medium. 100µl cell suspension (5x10⁴ cells/well) was seeded in 96 well tissue culture plate and incubated at 37°C in a humidified 5% CO₂ incubator.

Preparation of mushroom extract and compound stock

1 mg of dried mushroom powder was added to 1ml of DMEM and dissolved completely by cyclomixer. The extract solution was then filtered through 0.22 µm millipore syringe filter, to ensure the sterility.

Evaluation of antiproliferative effect by direct microscopic observation

The growth medium was removed after 24 hours. Freshly prepared samples in 5% DMEM were five times serially diluted by two fold dilution (100µg, 50µg, 25µg, 12.5µg, 6.25µg in 100µl of 5% MEM). Each concentration of 100µl, were added in triplicates, to the respective wells and incubated at 37°C in a humidified 5% carbondioxide incubator. Entire plate was observed at an interval of 24 hours; up to 72 hours in an inverted phase contrast tissue culture microscope (Olympus CKX41 with Optika Pro5 CCD camera). Microscopic observation were recorded as images. Any detectable changes in the morphology of the cells, such as rounding or shrinking of cells, granulation and vacuolization in the cytoplasm of the cells were considered as indicators of cytotoxicity.

Evaluation of antiproliferative effect by MTT assay

MTT (3-(4,5-Dimethylthiazol-2-yl)-2,5-Diphenyltetrazolium Bromide)(Sigma, M-5655) (15mg) was reconstituted in 3 ml of phosphate buffer saline, until completely dissolved and sterilized by filter sterilization. After 24 hours of incubation, the sample content in wells were removed and 30µl of reconstituted MTT solution was added to all the test and cell control wells. The plate was gently shaken, then incubated at 37°C in a humidified 5% carbondioxide incubator for 4 hours. After the incubation period, the supernatant was removed and 100µl of MTT solubilization solution (DMSO) was added. The wells were mixed gently by pipetting up and down, in order to solubilize the formazan crystals. The absorbance values were measured by using microplate reader, at a wavelength of 570 nm (Talarico *et al.*, 2004). Each concentration was tested in triplicate.

The percentage of growth inhibition was calculated using the formula:

$$\% \text{ of cell viability} = \frac{\text{Mean OD Samples} \times 100}{\text{Mean OD of control group}}$$

Results and Discussion

Sample collection

P. opuntiae isolated from areacanut tree logs, took 7 days for complete coverage of petriplate, when potato dextrose peptone agar was used as medium (Fig. 1). PCR amplification using ITS universal primers, gave an amplicon of size 657bp (Fig. 2).

Spawn run of *P. opuntiae* was completed on paddy grains within 10-11 days (Fig. 3). The mushroom took 8 days for complete spawn run, 9 days for pin head formation and 12 days for the first harvest (Fig. 4), when paddy straw was used as substrate for mushroom bed preparation. Around 750-800g of sporocarps were obtained from 1 kg of the substrate.

Estimation of proximate constituents

Proximate analysis was carried out on fresh and dried samples of *P. opuntiae*. Results of the proximate composition are presented in table 1.

Generally the, moisture contents of the mushroom are high, indicating that mushrooms are highly perishable. High moisture content promotes susceptibility to microbial growth and enzyme activity. The study revealed that, 90.70% moisture was present in *P. opuntiae* (Zhang *et al.*, 2007). The results indicated, the presence of significant nutritional quantities *viz.*, high amount of carbohydrates (46.13%), protein (19.96%), fat (2.2%), fibre (9.68%), ash (6.09) and lipids (3.88%). The proximate constitution recorded, was comparable, with

those reported for legumes, except for groundnut and soyabeans (Aletor and Aladetimi, 1995). Results were in agreement with those reported by other workers (Shashirekha, 2005; Jaworska and Bernas, 2011). Ogundana and Fagade (1981) indicated that mushroom contains 16.5% dry matter, out of which 7.4% is crude fibre, 14.6% is crude protein and 4.48% is fat and oil.

Estimation of polysaccharides

Reducing sugars, non-reducing sugars and total sugars of mushrooms, contributes for the expansion of fruit bodies and determine their nutritional quality. Polysaccharides are the best known and potent mushroom-derived antitumor/immunomodulating substances. Polysaccharide constitution of oyster mushrooms are presented in table 2 and the results are in conformation with the work of Jahangir *et al.*, 2015. The present work, indicated the presence of significant amount of polysaccharides *viz.*, cellulose (11.26%), starch (7.50%) and reducing sugars (6.31%).

Anticancer/*in vitro* antiproliferative effect by MTT ASSAY

The MTT (Microculture Tetrazolium Assay) or *in vitro* cell proliferation assay is one of the most widely used assays, for evaluating preliminary anticancer activity of both synthetic derivatives and natural products. The highly reliable, colorimetric based assay is readily performed on a wide range of cell lines. This assay gives an indication of whole cell cytotoxicity (Cauley *et al.*, 2013).

Table.1 Proximate analysis of *P. opuntiae*

Proximate constituents	*Quantity present (%)
Moisture	90.70
Carbohydrate	46.13
Protein	19.96
Fat	2.20
Lipids	3.88
Fibre	9.68
Ash	6.09

*Average of three replications

Table.2 Polysaccharide analysis of *P. opuntiae*

Polysaccharides	*Quantity present (%)
Reducing sugars	6.31
Starch	7.50
Cellulose	11.26

*Average of three replications

Table.3 *In vitro* antiproliferative activity of *P. opuntiae* extract against colon cancer cell line

Sample (µg/ml)	Concentration	*Absorbance at 540nm	*Percentage Viability
Control		2.189	100
<i>P. opuntiae</i> extracts			
6.25		1.942	88.726
12.5		1.620	74.029
25		1.253	57.240
50		1.026	46.886
100		0.641	29.270

LD 50 VALUE (g2) – 55.039 µg/ml

*Average of three replications

Fig.1 & 2 *P. opuntiae* culture and PCR amplicon of *P. opuntiae* using ITS primers

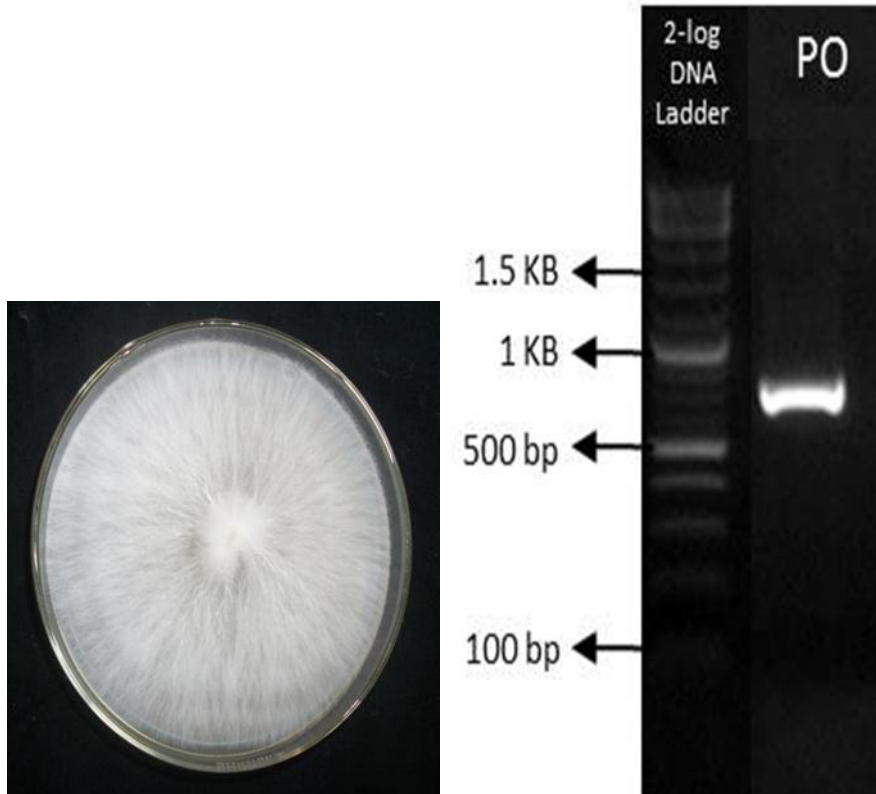
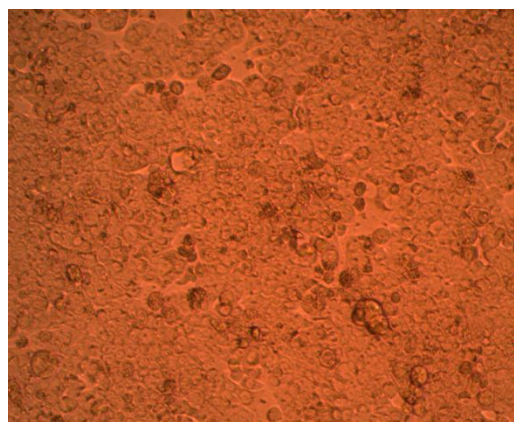


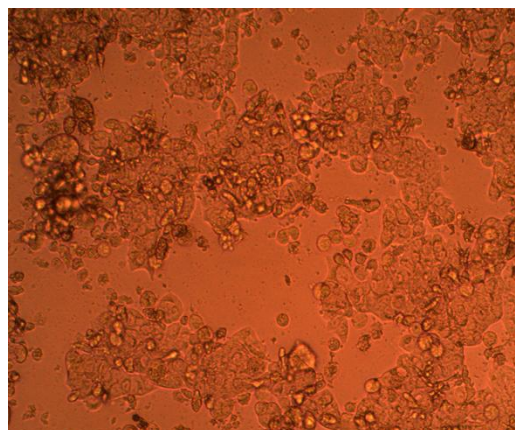
Fig.3&4 Spawn of *P. opuntiae* and Mature sporocarps of *P. opuntiae*



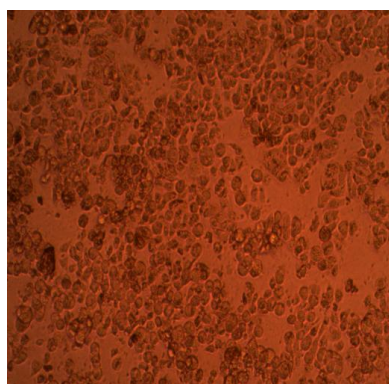
Fig.5 Microscopic observations of colon cancer cell lines treated with varied concentrations of *P. opuntiae* extracts



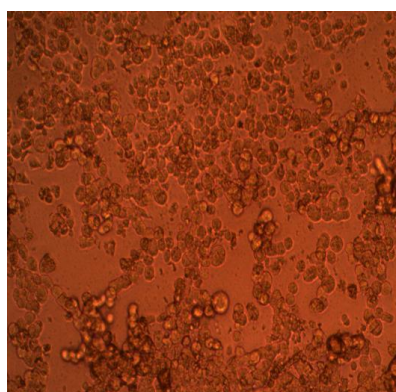
6.25 µg/ml



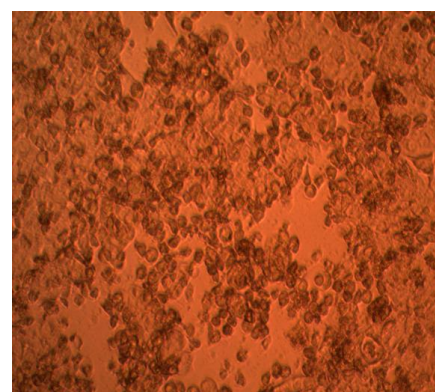
12.50 µg/ml



25.00 µg/ml



50.00 µg/ml



100.00 µg/ml

The viability of colon cancer cells treated with *P. opuntiae* extract, reduced in a concentration dependent manner (Table 3). Higher extract concentrations exhibited stronger anticancer activity. Dried extract of mushroom at concentration of 100µg/ml recorded the highest anti-proliferative effect, with least absorbance (0.641) at 540 nm and minimum cell viability (29.27%). On direct microscopic observations (Fig. 5), detectable changes in the morphology of the cells, such as rounding or shrinking of cells, granulation and vacuolization in the cytoplasm of the cells were recorded, as indicators of cytotoxicity.

Intensity of cytotoxicity increased with the concentration of dried mushroom extract. The LD- 50 value was found as 55.039µg/ml *i.e.* concentration of extract needed for the 50% of cell death. Results indicated that, *P. opuntiae* extract had significant anti-proliferative activity against colon cancer cell lines.

A possible explanation of observed cytotoxic effects lies in the fact that, polysaccharide extracts of various mushrooms are highly active in reactive oxygen species (ROS) generation (Durgo *et al.*, 2013). The results of

the current work, are consistent with the studies demonstrating that, basidiomycetes have antitumor activity by direct or indirect mechanisms (Talarico *et al.*, 2005).

In conclusion, this study contributes to the elaboration of nutritional and medicinal databases of the most consumed fungi species worldwide, allowing comparison between them. The observed levels of the proximate compositions of *P. opuntiae*, indicates its prospects, in complementing the nutrient supply deficits, prevalent in developing countries. The species can be recommended for the countries suffering from malnutrition; especially developing or third world countries. Dried mushroom extract of *P. opuntiae* showed significant anti-proliferative effect on colon cancer cell line. In the present context, future work is needed to determine, the effects of *P.opuntiae* extract on animals/humans in vivo. Although cancer therapies can inhibit tumour growth and prolong the life span of humans, they usually compromise the immune system and damage genetic material of healthy cells. Thus, supportive biotherapy, using *P. opuntiae* extracts, is a promising alternative/supplement to conventional cancer therapies.

References

- Aletor, V.A. and Aladetimi, O.O. 1995. Compositional studies on edible tropical species of mushrooms. *Food Chemi*, 54(3): 265-268.
- AOAC. 1995. Official methods of analysis (16th Ed.). Arlington VA, USA: Association (of Official Analytical Chemists,
- Cauley, J., Zivanovic, A. and Skropeta, D. 2013. Bioassays for Anticancer Activities. *Methods in Mol. Biol.*, 1055:191-205.
- Chung, C.K., Jeong,Y. and Ham, S.S., Anticancer activity of subfractions containing pure compounds of Chaga mushroom (*Inonotusobliquus*) extract in human cancer cells and in Balbc/c mice bearing Sarcoma-180 cells. *Nutrition Res. Practice*, 4: 177–182.
- Durgo, K., Koncar, M., Komes, D., Franekic, J., Jakopovich, I., Jakopovich, N. and Jakopovich, B. 2013. Cytotoxicity of blended versus single medicinal mushroom extracts on human cancer cell lines: Contribution of polyphenol and polysaccharide content. *Int. J. Med. Mushrooms*, 15(5): 435-448.
- Eliott, T.J. 1985. Spawn making and spawns. In: Flegg, P.B., Spencer, D.M., and Wood, D.A. (eds), *The Biology and Technology of the Cultivated mushrooms*. John Wiley & Sons, New York, pp. 131-139.
- Hedge, J.E. and Hofreiter, B.T. 1962. In: *Carbohydrate Chemistry*, 17 (Eds. Whistler R.L. and Be Miller, J.N.), Academic Press, New York.
- Jahangir, M.M., Samin, G., Khan, N.A., Rehman, A., Aslam, Z. and Anjad, M. 2015. Performance of oyster mushroom (*Pleurotostreatus*) grown on cotton waste and sorghum straw based growing substrates. *Pakistan J. Phytopathol.*, 27(01): 77-81.
- Jaworska, G. and Bernaś, E. 2011. Comparison of amino acid content in canned *Pleurotostreatus* and *Agaricusbisporus* mushrooms. *Vegetable Crops Res. Bull.*, 74: 107-115.
- Kakon, A.J., Karim, B.C. and Saha, S. 2012. Mushroom is an Ideal Food Supplement. *J. Dhaka Nat. Med. College and Hospital*, 18 (1): 58-62.
- Miller, G.L. 1972. *Anal. Chem.*, 426: 31 p.
- Ogundana, S.K. and Fagade, O. 1981. The nutritive value of some Nigerian edible mushrooms. In: *Mushroom Science XI, Proceedings of the Eleventh International Scientific Congress on the*

- cultivation of edible fungi, Australia.* pp 123-131.
- Shashirekha, M.N., Rajarathnam, S. and Bano, Z. 2005. Effects of supplementing rice straw growth substrate with cotton seeds on the analytical characteristics of the mushroom, *Pleurotus oryzae* (Block & Tsao). *Food Chem.*, 92(2): 255-259.
- Talarico, L.B., Pujol, C.A., Zibetti, R.G., Faria, P.C., Nosedá, M.D. and Duarte, M.E. 2005. The antiviral activity of sulfated polysaccharides against dengue virus is dependent on virus serotype and host cell. *Antiviral Res.*, 66(2-3): 103-110.
- Updegraff. 1969. Semi micro determination of cellulose in biological materials. *Anal. Biochem.*, 32(3): 420-424.
- Yamaguchi, Y., Miyahara, E. and Hihara J. 2011. Efficacy and safety of orally administered *Lentinula edodes* mycelia extract for patients undergoing cancer chemotherapy: a pilot study. *American J. Chinese Med.*, 39: 451-459.
- Zhang, M., Cui, S.W., Cheung, P.C.K. and Wang, Q. 2007. Antitumor polysaccharides from mushrooms: a review on their isolation process, structural characteristics and antitumor activity. *Trends in Food Sci. Technol.*, 18: 4-19.

How to cite this article:

Krishnapriya, P.J., and Geetha, D. 2017. Proximate Constitution and Antiproliferative Activity of *Pleurotus opuntiae* (Durieu and Lev.) Sacc. against Colon Cancer. *Int.J.Curr.Microbiol.App.Sci*. 6(5): 1406-1414. doi: <https://doi.org/10.20546/ijcmas.2017.605.153>